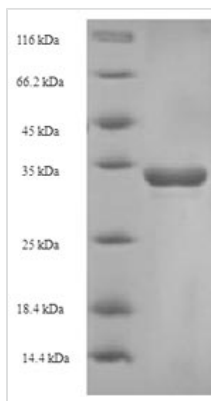




Recombinant Bovine T-cell surface glycoprotein CD8 alpha chain (CD8A), partial

Product Code	CSB-EP004966BO
Relevance	Identifies cytotoxic/suppressor T-cells that interact with MHC class I bearing targets. CD8 is thought to play a role in the process of T-cell mediated killing. CD8 alpha chains binds to class I MHC molecules alpha-3 domains.
Abbreviation	Recombinant Bovine CD8A protein, partial
Storage	The shelf life is related to many factors, storage state, buffer ingredients, storage temperature and the stability of the protein itself. Generally, the shelf life of liquid form is 6 months at -20°C/-80°C. The shelf life of lyophilized form is 12 months at -20°C/-80°C.
Uniprot No.	P31783
Alias	CD8a
Product Type	Recombinant Protein
Immunogen Species	Bos taurus (Bovine)
Purity	Greater than 90% as determined by SDS-PAGE.
Sequence	LSFRMSPTQKETRLGEKVELQCELLQSGMATGCSWLRHIPGDDPRPTFLMYL SAQRVKLAEGLDPRHISGAKVSGTKFQLTLSSFLQEDQGYIFCSVVSNSILYFS NFVPVFLPAKPATTPAMRPSSAAPTSAQTRSVSPRSEVCRTSAGSAVDTSRL DFACN
Research Area	Others
Source	E.coli
Target Names	CD8A
Protein Names	Recommended name: T-cell surface glycoprotein CD8 alpha chain Alternative name(s): CD_antigen= CD8a
Expression Region	26-189aa
Notes	Repeated freezing and thawing is not recommended. Store working aliquots at 4°C for up to one week.
Tag Info	N-terminal 6xHis-SUMO-tagged
Mol. Weight	33.9kDa
Protein Length	Extracellular Domain
Image	



(Tris-Glycine gel) Discontinuous SDS-PAGE (reduced) with 5% enrichment gel and 15% separation gel.

Reconstitution

We recommend that this vial be briefly centrifuged prior to opening to bring the contents to the bottom. Please reconstitute protein in deionized sterile water to a concentration of 0.1-1.0 mg/mL. We recommend to add 5-50% of glycerol (final concentration) and aliquot for long-term storage at -20°C/-80°C. Our default final concentration of glycerol is 50%. Customers could use it as reference.

Shelf Life

The shelf life is related to many factors, storage state, buffer ingredients, storage temperature and the stability of the protein itself. Generally, the shelf life of liquid form is 6 months at -20°C/-80°C. The shelf life of lyophilized form is 12 months at -20°C/-80°C.