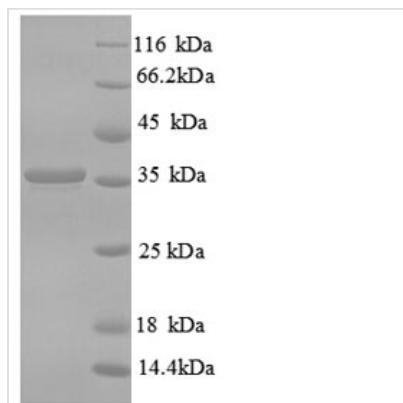


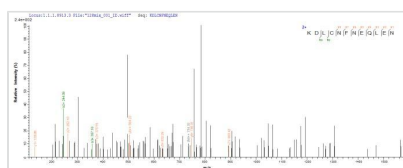


# Recombinant Human CD59 glycoprotein (CD59)

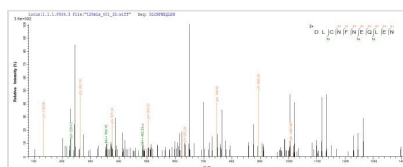
<b>Product Code</b>	CSB-EP004947HU
<b>Relevance</b>	Potent inhibitor of the complement membrane attack complex (MAC) action. Acts by binding to the C8 and/or C9 components of the assembling MAC, thereby preventing incorporation of the multiple copies of C9 required for complete formation of the osmolytic pore. This inhibitor appears to be species-specific. Involved in signal transduction for T-cell activation complexed to a protein tyrosine kinase. The soluble form from urine retains its specific complement binding activity, but exhibits greatly reduced ability to inhibit MAC assembly on cell membranes.
<b>Abbreviation</b>	Recombinant Human CD59 protein
<b>Storage</b>	The shelf life is related to many factors, storage state, buffer ingredients, storage temperature and the stability of the protein itself. Generally, the shelf life of liquid form is 6 months at -20°C/-80°C. The shelf life of lyophilized form is 12 months at -20°C/-80°C.
<b>Uniprot No.</b>	P13987
<b>Alias</b>	1F5 antigen; 20 kDa homologous restriction factor ; HRF-20 ; HRF20 MAC-inhibitory protein ; MAC-IPMEM43 antigen; Membrane attack complex inhibition factor ; MACIF; Membrane inhibitor of reactive lysis ; MIRL Protectin; CD59
<b>Product Type</b>	Recombinant Protein
<b>Immunogen Species</b>	Homo sapiens (Human)
<b>Purity</b>	Greater than 90% as determined by SDS-PAGE.
<b>Sequence</b>	LQCYNCPNPTADCKTAVNCSSDFDAKLITKAGLQVYNKCWKFEHCNFDVTT RLRENELTYCCKKDLCNFNEQLEN
<b>Research Area</b>	Cardiovascular
<b>Source</b>	E.coli
<b>Target Names</b>	CD59
<b>Expression Region</b>	26-102aa
<b>Notes</b>	Repeated freezing and thawing is not recommended. Store working aliquots at 4°C for up to one week.
<b>Tag Info</b>	N-terminal GST-tagged
<b>Mol. Weight</b>	36.0kDa
<b>Protein Length</b>	Full Length of Mature Protein
<b>Image</b>	



(Tris-Glycine gel) Discontinuous SDS-PAGE (reduced) with 5% enrichment gel and 15% separation gel.



Based on the SEQUEST from database of E.coli host and target protein, the LC-MS/MS Analysis result of CSB-EP004947HU could indicate that this peptide derived from E.coli-expressed Homo sapiens (Human) CD59.



Based on the SEQUEST from database of E.coli host and target protein, the LC-MS/MS Analysis result of CSB-EP004947HU could indicate that this peptide derived from E.coli-expressed Homo sapiens (Human) CD59.

## Reconstitution

We recommend that this vial be briefly centrifuged prior to opening to bring the contents to the bottom. Please reconstitute protein in deionized sterile water to a concentration of 0.1-1.0 mg/mL. We recommend to add 5-50% of glycerol (final concentration) and aliquot for long-term storage at -20°C/-80°C. Our default final concentration of glycerol is 50%. Customers could use it as reference.

## Shelf Life

The shelf life is related to many factors, storage state, buffer ingredients, storage temperature and the stability of the protein itself. Generally, the shelf life of liquid form is 6 months at -20°C/-80°C. The shelf life of lyophilized form is 12 months at -20°C/-80°C.