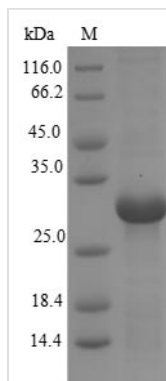




Recombinant Macaca mulatta CD40 ligand (CD40LG), partial

Product Code	CSB-EP004937MOW
Relevance	Cytokine that binds to CD40/TNFRSF5. Costimulates T-cell proliferation and cytokine production. Its cross-linking on T-cells generates a costimulatory signal which enhances the production of IL4 and IL10 in conjunction with the TCR/CD3 ligation and CD28 costimulation. Induces the activation of NF-kappa-B and kinases MAPK8 and PAK2 in T-cells. Mediates B-cell proliferation in the absence of co-stimulus as well as IgE production in the presence of IL4. Involved in immunoglobulin class switching.
Abbreviation	Recombinant Rhesus macaque CD40LG protein, partial
Storage	The shelf life is related to many factors, storage state, buffer ingredients, storage temperature and the stability of the protein itself. Generally, the shelf life of liquid form is 6 months at -20°C/-80°C. The shelf life of lyophilized form is 12 months at -20°C/-80°C.
Uniprot No.	P63304
Product Type	Recombinant Protein
Immunogen Species	Macaca mulatta (Rhesus macaque)
Purity	Greater than 90% as determined by SDS-PAGE.
Sequence	VYLHRRLDKIEDERNLHEDFVFMKTIQRCNTGERSLSLLNCEEIKSQFEGFVKD IMLNKEEKKKENSFEMQKGDQNPQIAAHVISEASSKTTSVLQWAEKGYTMSN NLVTLENGKQLTVKRQGLYYIAQVTFCSNREASSQAPFIASLCLKSPGRFERI LLRAANTHSSAKPCGQQSIHLGGVFELQPGASVFNVTDPQSQVSHGTGFTSF GLLKL
Research Area	Immunology
Source	E.coli
Target Names	CD40LG
Protein Names	Tumor necrosis factor ligand superfamily member 5 CD_antigen: CD154
Expression Region	44-261aa
Notes	Repeated freezing and thawing is not recommended. Store working aliquots at 4°C for up to one week.
Tag Info	N-terminal 6xHis-tagged
Mol. Weight	28.5 kDa
Protein Length	Extracellular Domain
Image	



(Tris-Glycine gel) Discontinuous SDS-PAGE (reduced) with 5% enrichment gel and 15% separation gel.

Reconstitution

We recommend that this vial be briefly centrifuged prior to opening to bring the contents to the bottom. Please reconstitute protein in deionized sterile water to a concentration of 0.1-1.0 mg/mL. We recommend to add 5-50% of glycerol (final concentration) and aliquot for long-term storage at -20°C/-80°C. Our default final concentration of glycerol is 50%. Customers could use it as reference.

Shelf Life

The shelf life is related to many factors, storage state, buffer ingredients, storage temperature and the stability of the protein itself. Generally, the shelf life of liquid form is 6 months at -20°C/-80°C. The shelf life of lyophilized form is 12 months at -20°C/-80°C.