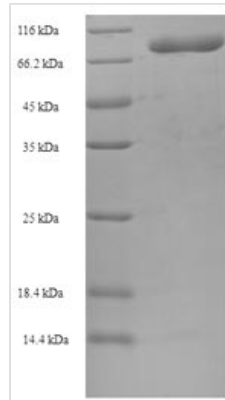




# Recombinant Human T-complex protein 1 subunit beta (CCT2)

<b>Product Code</b>	CSB-EP004856HU
<b>Relevance</b>	Molecular chaperone; assists the folding of proteins upon ATP hydrolysis. As part of the BBS/CCT complex may play a role in the assembly of BBSome, a complex involved in ciliogenesis regulating transports vesicles to the cilia. Known to play a role, in vitro, in the folding of actin and tubulin.
<b>Abbreviation</b>	Recombinant Human CCT2 protein
<b>Storage</b>	The shelf life is related to many factors, storage state, buffer ingredients, storage temperature and the stability of the protein itself. Generally, the shelf life of liquid form is 6 months at -20°C/-80°C. The shelf life of lyophilized form is 12 months at -20°C/-80°C.
<b>Uniprot No.</b>	P78371
<b>Product Type</b>	Recombinant Proteins
<b>Immunogen Species</b>	Homo sapiens (Human)
<b>Purity</b>	Greater than 90% as determined by SDS-PAGE.
<b>Sequence</b>	ASLSLAPVNIKFAGADEERAETARLTSTFIGAIAIGDLVKSTLGPKGMDKILLSSGR DASLMVTNDGATILKNIGVDNPAAKVLVDMSRVQDDEVGDGTTSVTVLAAELL REAESLIAKKIHPQTIIAGWREATKAAREALLSSAVDHGSDEVKFRQDLMNIAG TTLSSKLLTHHKDHFTKLAVEAVLRLKGSNLEAIHIIKKLGGSLADSYLDEGFLL DKKIGVNQPKRIENAKILIAN TGMDTDKIKIFGSRVRVDSTAKVAEIEHAEKEKM KEKVERILKHGINCFINRQLIYNYPEQLFGAAGVMAIEHADFAGVERLALVTGGE IASTFDHPELVKLGSKLIEEVMIGEDKLIHFSGVALGEACTIVLRGATQQILDEA ERSLHDALCVLAQTVKDSRTVYGGGCSEMLMAHAVTQLANRTPGKEAVAME SYAKALRMLPTIADNAGYDSADLVAQLRAAHSEGNTTAGLDMREGTIGDMAIL GITESFQVKRQVLLSAAEAAEVILRVDNIIKAAPRKRVPDHHPC
<b>Research Area</b>	Signal Transduction
<b>Source</b>	E.coli
<b>Target Names</b>	CCT2
<b>Expression Region</b>	2-535aa
<b>Notes</b>	Repeated freezing and thawing is not recommended. Store working aliquots at 4°C for up to one week.
<b>Tag Info</b>	N-terminal 6xHis-SUMO-tagged
<b>Mol. Weight</b>	70.3 kDa
<b>Protein Length</b>	Full Length of Mature Protein
<b>Image</b>	



(Tris-Glycine gel) Discontinuous SDS-PAGE (reduced) with 5% enrichment gel and 15% separation gel.

## Description

Amino acids 2-535 form the expressed segment for recombinant Human CCT2. The expected molecular weight for the CCT2 protein is calculated to be 73.4 kDa. The CCT2 protein was expressed in e.coli. The N-terminal 6xHis-SUMO tag was fused into the coding gene segment of CCT2, making it easier to detect and purify the CCT2 recombinant protein in the later stages of expression and purification.

T-complex protein 1 subunit beta (CCT2) is a crucial molecular chaperone in cells, primarily involved in the process of protein folding. Research on CCT2 plays a vital role in our understanding of protein folding and maintaining structural integrity within cells. In cancer research, the expression of CCT2 is associated with various types of tumors, particularly playing a significant role in the proliferation and invasion of tumor cells. Scientists aim to uncover the molecular mechanisms of CCT2 in cancer development, hoping to provide new targets for cancer treatment. Additionally, CCT2 is linked to research on neurological disorders. Its function in neurons may be related to the occurrence of neurodegenerative diseases. Scientists are working to gain a deeper understanding of the role of CCT2 in the nervous system, aiming to provide new clues for the treatment of related diseases.

## Shelf Life

The shelf life is related to many factors, storage state, buffer ingredients, storage temperature and the stability of the protein itself.

Generally, the shelf life of liquid form is 6 months at -20°C/-80°C. The shelf life of lyophilized form is 12 months at -20°C/-80°C.