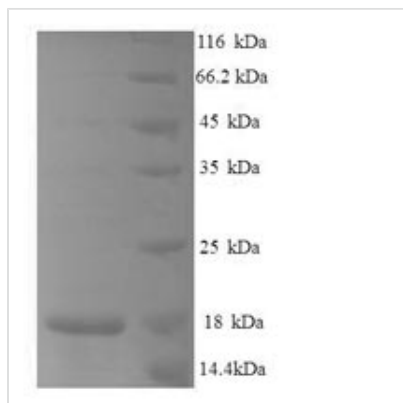




# Recombinant Mouse C-C motif chemokine 25 (Ccl25), partial

<b>Product Code</b>	CSB-EP004789MO1
<b>Relevance</b>	Potentially involved in T-cell development. Recombinant protein shows chotactic activity on thymocytes, macrophages, THP-1 cells, and dendritics cells but is inactive on peripheral blood lymphocytes and neutrophils. Binds to CCR9. Binds to atypical chokine receptor ACKR4 and mediates the recruitment of beta-arrestin (ARRB1/2) to ACKR4.
<b>Abbreviation</b>	Recombinant Mouse Ccl25 protein, partial
<b>Storage</b>	The shelf life is related to many factors, storage state, buffer ingredients, storage temperature and the stability of the protein itself. Generally, the shelf life of liquid form is 6 months at -20°C/-80°C. The shelf life of lyophilized form is 12 months at -20°C/-80°C.
<b>Uniprot No.</b>	O35903
<b>Alias</b>	Chemokine TECKSmall-inducible cytokine A25Thymus-expressed chemokine
<b>Product Type</b>	Recombinant Protein
<b>Immunogen Species</b>	Mus musculus (Mouse)
<b>Purity</b>	Greater than 90% as determined by SDS-PAGE.
<b>Sequence</b>	GAFEDCCLGYQHRIKWNVLRHARNYHQQEVSGSCNLRAVRFYFRQKVVCGN PEDMNVKRAMRILTARKRLVHWKSASDSQTERKKS NHMKS KVENPNSTSVRS ATLGHPRMVMMMPRKTN
<b>Research Area</b>	Others
<b>Source</b>	E.coli
<b>Target Names</b>	Ccl25
<b>Expression Region</b>	25-144aa
<b>Notes</b>	Repeated freezing and thawing is not recommended. Store working aliquots at 4°C for up to one week.
<b>Tag Info</b>	N-terminal 6xHis-tagged
<b>Mol. Weight</b>	18.0kDa
<b>Protein Length</b>	Partial
<b>Image</b>	



(Tris-Glycine gel) Discontinuous SDS-PAGE (reduced) with 5% enrichment gel and 15% separation gel.

### Reconstitution

We recommend that this vial be briefly centrifuged prior to opening to bring the contents to the bottom. Please reconstitute protein in deionized sterile water to a concentration of 0.1-1.0 mg/mL. We recommend to add 5-50% of glycerol (final concentration) and aliquot for long-term storage at -20°C/-80°C. Our default final concentration of glycerol is 50%. Customers could use it as reference.

### Shelf Life

The shelf life is related to many factors, storage state, buffer ingredients, storage temperature and the stability of the protein itself. Generally, the shelf life of liquid form is 6 months at -20°C/-80°C. The shelf life of lyophilized form is 12 months at -20°C/-80°C.