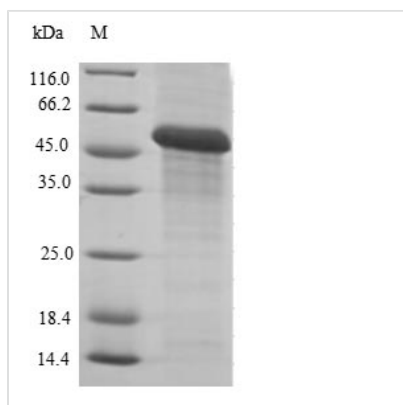




Recombinant Human Carbonyl reductase [NADPH] 1 (CBR1)

Product Code	CSB-EP004586HU
Abbreviation	Recombinant Human CBR1 protein
Storage	The shelf life is related to many factors, storage state, buffer ingredients, storage temperature and the stability of the protein itself. Generally, the shelf life of liquid form is 6 months at -20°C/-80°C. The shelf life of lyophilized form is 12 months at -20°C/-80°C.
Uniprot No.	P16152
Product Type	Recombinant Proteins
Immunogen Species	Homo sapiens (Human)
Purity	Greater than 85% as determined by SDS-PAGE.
Sequence	SSGIHVALVTGGNKGIGLAIVRDLCLRFSGDVVLTARDVTRGQAAVQQLQAEG LSPRFHQLDIDDLQSIRALRDFLRKEYGGDLVLVNNAGIAFKVADPTPFHIQAEV TMKTNFFGTRDVCTELLPLIKPQGRVNVSSIMSVRALKSCSPELQQKFRSETI TEEELVGLMKNKFVEDTKKGVHQKEGWPSSAYGVTKIGVTVLSRIHARKLSEQR KGDKILLNACCPGWVRTDMAGPKATKSPEEGAETPVYLALLPPDAEGPHGQF VSEKRVEQW
Source	E.coli
Target Names	CBR1
Protein Names	Recommended name: Carbonyl reductase [NADPH] 1 EC= 1.1.1.184Alternative name(s): 15-hydroxyprostaglandin dehydrogenase [NADP(+)] EC= 1.1.1.197 NADPH-dependent carbonyl reductase 1 Prostaglandin 9-ketoreductase Prostaglandin-E(2)
Expression Region	2-277aa
Notes	Repeated freezing and thawing is not recommended. Store working aliquots at 4°C for up to one week.
Tag Info	N-terminal GST-tagged
Protein Length	Full Length of Mature Protein

Image



(Tris-Glycine gel) Discontinuous SDS-PAGE (reduced) with 5% enrichment gel and 15% separation gel.

Shelf Life

The shelf life is related to many factors, storage state, buffer ingredients, storage temperature and the stability of the protein itself. Generally, the shelf life of liquid form is 6 months at -20°C/-80°C. The shelf life of lyophilized form is 12 months at -20°C/-80°C.