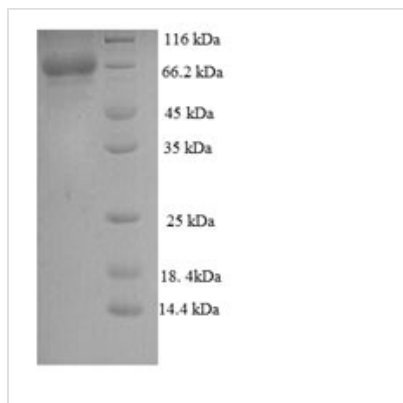




Recombinant Human Calpastatin (CAST)

Product Code	CSB-EP004561HU
Relevance	Specific inhibition of calpain (calcium-dependent cysteine protease). Plays a key role in postmort tenderization of meat and have been proposed to be involved in muscle protein degradation in living tissue.
Abbreviation	Recombinant Human CAST protein
Storage	The shelf life is related to many factors, storage state, buffer ingredients, storage temperature and the stability of the protein itself. Generally, the shelf life of liquid form is 6 months at -20°C/-80°C. The shelf life of lyophilized form is 12 months at -20°C/-80°C.
Uniprot No.	P20810
Alias	Calpain inhibitor;Sperm BS-17 component
Product Type	Recombinant Protein
Immunogen Species	Homo sapiens (Human)
Purity	Greater than 90% as determined by SDS-PAGE.
Sequence	<p>MNPTETKAVKTEPEKKSQSTKPKSLPKQASDTGSNDAHNNKAVSRSAEQQPS</p> <p>EKSTEPKTKPQDMISAGGESVAGITAISGKPGDKKKEKSLTPAVPVESKPDKP</p> <p>SGKSGMDAALDDLIDTLGGPEETEEENTTYTGPEVSDPMSSTYIEELGKREVTI</p> <p>PPKYRELLAKKEGITGPPADSSKPIGPDDAIDALSSDFTCGSPTAAGKKTEKEE</p> <p>STEV LKAQSAGTVRSAAPPQEKKRKVEKDTMSDQALEALSASLGTRQAEPEL</p> <p>DLRSIKEVDEAKAKEE KLEKCGEDDETIPSEYRLKPATDKDGKPLLPEPEEKPK</p> <p>PRSESELIDELSEDFDRSECKEKPSKPTEKTEESKAAAPAPVSEAVCRTSMCSI</p> <p>QSAPPEPATLKGTVPDDAVEALADSLGKKEADPEDGKPVMDKVKEKAKEEDR</p> <p>EKLGEKEETIPPDYRLEE VKDKDGKPLL PKESKEQLPPMSEDFLLDALSEDFSG</p> <p>PQNASSLKFE DAKLAAAISEVVSQT PASTTQAGAPPRDTSQSDKDLDDALDKL</p> <p>SDSLGQRQPD PDENKPMEDKVKEKAKAEHRDKLGERDDTIPPEYRHLLDDNG</p> <p>QDKPVKPPTKKSEDSKKPADDQDPIDALSGDL DSCPSTTETSQNTAKDKCKKA</p> <p>ASSSKAPKNGGKAKDS AKTTEETSKPKDD</p>
Research Area	Neuroscience
Source	E.coli
Target Names	CAST
Expression Region	1-667aa
Notes	Repeated freezing and thawing is not recommended. Store working aliquots at 4°C for up to one week.
Tag Info	N-terminal 6xHis-tagged
Mol. Weight	75.9kDa
Protein Length	Full Length of isoform 4
Image	



(Tris-Glycine gel) Discontinuous SDS-PAGE (reduced) with 5% enrichment gel and 15% separation gel.

Reconstitution

We recommend that this vial be briefly centrifuged prior to opening to bring the contents to the bottom. Please reconstitute protein in deionized sterile water to a concentration of 0.1-1.0 mg/mL. We recommend to add 5-50% of glycerol (final concentration) and aliquot for long-term storage at -20°C/-80°C. Our default final concentration of glycerol is 50%. Customers could use it as reference.

Shelf Life

The shelf life is related to many factors, storage state, buffer ingredients, storage temperature and the stability of the protein itself. Generally, the shelf life of liquid form is 6 months at -20°C/-80°C. The shelf life of lyophilized form is 12 months at -20°C/-80°C.