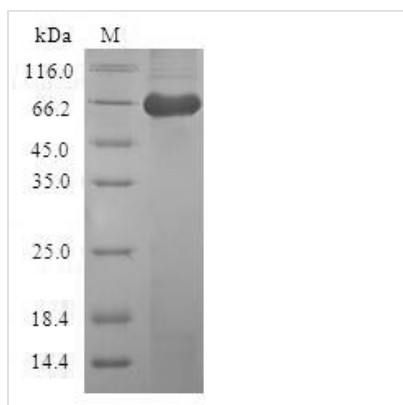




Recombinant Human Macrophage-capping protein (CAPG)

Product Code	CSB-EP004489HU
Relevance	Calcium-sensitive protein which reversibly blocks the barbed ends of actin filaments but does not sever preformed actin filaments. May play an important role in macrophage function. May play a role in regulating cytoplasmic and/or nuclear structures through potential interactions with actin. May bind DNA.
Abbreviation	Recombinant Human CAPG protein
Storage	The shelf life is related to many factors, storage state, buffer ingredients, storage temperature and the stability of the protein itself. Generally, the shelf life of liquid form is 6 months at -20°C/-80°C. The shelf life of lyophilized form is 12 months at -20°C/-80°C.
Uniprot No.	P40121
Alias	Actin regulatory protein CAP-G
Product Type	Recombinant Protein
Immunogen Species	Homo sapiens (Human)
Purity	Greater than 90% as determined by SDS-PAGE.
Sequence	MYTAIPQSGSPFPGSVQDPGLHVWRVEKLKPVPVAQENQGVFFSGDSYLVLH NGPEEVSHLHLWIGQQSSRDEQGACAVLAVHLNLTLLGERPVQHQREVQGNES DLFMSYFPRGLKYQEGGVESAFHKTSTGAPAAIKKLYQVKGKKNIRATERALN WDSFNTGDCFILDGQNIFAWCGGKSNILERNKARDLALAIRDSERQGKAQVEI VTDGEEPAEMIQVLGPKPALKEGNPEEDLTADKANAAQAALYKVSDATGQMN LTKVADSSPFALELLISDDCFVLDNGLCGKIYIWKGRKANERQAALQVAEGF ISRMQYAPNTQVEILPQGRESPIFKQFFKDWK
Research Area	Immunology
Source	E.coli
Target Names	CAPG
Protein Names	Recommended name: Macrophage-capping protein Alternative name(s): Actin regulatory protein CAP-G
Expression Region	1-348aa
Notes	Repeated freezing and thawing is not recommended. Store working aliquots at 4°C for up to one week.
Tag Info	N-terminal GST-tagged
Mol. Weight	65.5kDa
Protein Length	Full Length of BC014549
Image	



(Tris-Glycine gel) Discontinuous SDS-PAGE (reduced) with 5% enrichment gel and 15% separation gel.

Reconstitution

We recommend that this vial be briefly centrifuged prior to opening to bring the contents to the bottom. Please reconstitute protein in deionized sterile water to a concentration of 0.1-1.0 mg/mL. We recommend to add 5-50% of glycerol (final concentration) and aliquot for long-term storage at -20°C/-80°C. Our default final concentration of glycerol is 50%. Customers could use it as reference.

Shelf Life

The shelf life is related to many factors, storage state, buffer ingredients, storage temperature and the stability of the protein itself. Generally, the shelf life of liquid form is 6 months at -20°C/-80°C. The shelf life of lyophilized form is 12 months at -20°C/-80°C.