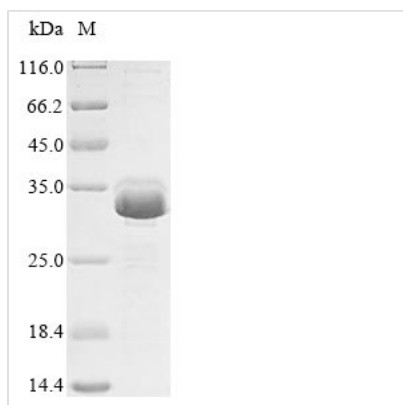




Recombinant Human Calmodulin-1 (CALM1)

Product Code	CSB-EP004445HU
Relevance	Calmodulin mediates the control of a large number of enzymes, ion channels, aquaporins and other proteins by Ca ²⁺ . Among the enzymes to be stimulated by the calmodulin-Ca ²⁺ complex are a number of protein kinases and phosphatases. Together with CCP110 and centrin, is involved in a genetic pathway that regulates the centrosome cycle and progression through cytokinesis.
Abbreviation	Recombinant Human CALM1 protein
Storage	The shelf life is related to many factors, storage state, buffer ingredients, storage temperature and the stability of the protein itself. Generally, the shelf life of liquid form is 6 months at -20°C/-80°C. The shelf life of lyophilized form is 12 months at -20°C/-80°C.
Uniprot No.	P0DP23
Storage Buffer	Tris-based buffer, 50% glycerol
Product Type	Recombinant Proteins
Immunogen Species	Homo sapiens (Human)
Purity	Greater than 85% as determined by SDS-PAGE.
Sequence	ADQLTEEQIAEFKEAFSLFDKDGDTITTKELGTVMRSLGQNPTEAELQDMINE VDADGNGTIDFPEFLTMMARKMKDTSDEEEIREAFRVFDKDGNGYISAAELRH VMTNLGEKLTDEEVDEMIREADIDGDGQVNYEEFVQMMTAK
Research Area	Signal Transduction
Source	E.coli
Target Names	CALM1
Expression Region	2-149aa
Notes	Repeated freezing and thawing is not recommended. Store working aliquots at 4°C for up to one week.
Tag Info	N-terminal 6xHis-SUMO-tagged
Mol. Weight	32.7 kDa
Protein Length	Full Length of Mature Protein
Image	



(Tris-Glycine gel) Discontinuous SDS-PAGE (reduced) with 5% enrichment gel and 15% separation gel.

Shelf Life

The shelf life is related to many factors, storage state, buffer ingredients, storage temperature and the stability of the protein itself. Generally, the shelf life of liquid form is 6 months at -20°C/-80°C. The shelf life of lyophilized form is 12 months at -20°C/-80°C.