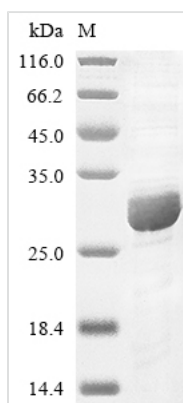




Recombinant Human Complement component C8 gamma chain (C8G)

Product Code	CSB-EP004196HUa0
Abbreviation	Recombinant Human C8G protein
Storage	The shelf life is related to many factors, storage state, buffer ingredients, storage temperature and the stability of the protein itself. Generally, the shelf life of liquid form is 6 months at -20°C/-80°C. The shelf life of lyophilized form is 12 months at -20°C/-80°C.
Uniprot No.	P07360
Product Type	Recombinant Proteins
Immunogen Species	Homo sapiens (Human)
Purity	Greater than 85% as determined by SDS-PAGE.
Sequence	QKPQRPRRPASPISTIQPKANFDAQQFAGTWLLVAVGSACRFLQEQQGHRAEA TTLHVAPQGTAMAVSTFRKLDGICWQVRQLYGDTGVLGRFLLQARDARGAVH VVVAETDYQSFAVLYLERAGQLSVKLYARSLPVSDSVLSGFQQRVQEHLTED QIFYFPKYGFCEAADQFHVLDVRR
Research Area	Immunology
Source	E.coli
Target Names	C8G
Expression Region	21-202aa
Notes	Repeated freezing and thawing is not recommended. Store working aliquots at 4°C for up to one week.
Tag Info	N-terminal 6xHis-tagged
Mol. Weight	26.4 kDa
Protein Length	Full length

Image



(Tris-Glycine gel) Discontinuous SDS-PAGE (reduced) with 5% enrichment gel and 15% separation gel.

Description



The gene encoding the Human C8G protein (21-202aa) is incorporated into a plasmid vector to generate recombinant plasmid, which is then introduced into e.coli cells. The e.coli cells containing the recombinant plasmid are selected and cultured under conditions that stimulate the expression of the gene of interest. A N-terminal 6xHis tag is attached to the protein. After expression, affinity purification is employed to isolate and purify the recombinant Human C8G protein from the cell lysate. Denaturing SDS-PAGE is utilized to resolve the resulting recombinant Human C8G protein, revealing a purity level exceeding 85%.

Shelf Life

The shelf life is related to many factors, storage state, buffer ingredients, storage temperature and the stability of the protein itself.

Generally, the shelf life of liquid form is 6 months at -20°C/-80°C. The shelf life of lyophilized form is 12 months at -20°C/-80°C.