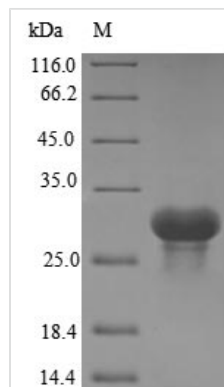




Recombinant Human Complement C1q subcomponent subunit A (C1QA)

| | |
|--------------------------|---|
| Product Code | CSB-EP003637HUb1 |
| Relevance | C1q associates with the proenzymes C1r and C1s to yield C1, the first component of the serum complement system. The collagen-like regions of C1q interact with the Ca ²⁺ -dependent C1r2C1s2?proenzyme complex, and efficient activation of C1 takes place on interaction of the globular heads of C1q with the Fc regions of IgG or IgM antibody present in immune complexes. |
| Abbreviation | Recombinant Human C1QA protein |
| Storage | The shelf life is related to many factors, storage state, buffer ingredients, storage temperature and the stability of the protein itself. Generally, the shelf life of liquid form is 6 months at -20°C/-80°C. The shelf life of lyophilized form is 12 months at -20°C/-80°C. |
| Uniprot No. | P02745 |
| Product Type | Recombinant Protein |
| Immunogen Species | Homo sapiens (Human) |
| Purity | Greater than 85% as determined by SDS-PAGE. |
| Sequence | EDLCRAPDGKKGEAGRPGRRGRPGLKGEQGEPGAPGIRTGIQGLKGDQGEP GPSGNPGKVGYPGPSGPLGARGIPGIKGTGSPGNIKDQPRPAFSAIRRNPP MGGNVVIFDVTITNQEEPYNHSGRFVCTVPGYYYFTFQVLSQWEICLSIVSSS RGQVRRSLGFCDTTNKGLFQVVS GGMVLQLQQGDQVWVEKDPKKGHIYQGS EADSVFSGFLIFPSA |
| Research Area | Immunology |
| Source | E.coli |
| Target Names | C1QA |
| Expression Region | 23-245aa |
| Notes | Repeated freezing and thawing is not recommended. Store working aliquots at 4°C for up to one week. |
| Tag Info | N-terminal 10xHis-tagged and C-terminal Myc-tagged |
| Mol. Weight | 30.7 kDa |
| Protein Length | Full Length of Mature Protein |
| Image | |



(Tris-Glycine gel) Discontinuous SDS-PAGE (reduced) with 5% enrichment gel and 15% separation gel.

Description

Explore the intricacies of the immune response and complement system with our Recombinant Human C1QA protein. Complement C1q subcomponent subunit A (C1QA) is a crucial element of the classical complement pathway, participating in the activation process and contributing to the overall innate immune response.

This product contains the full length of the mature C1QA protein (23-245aa), ensuring a high-quality and accurate representation for your research needs. Expressed in E.coli, the protein is equipped with an N-terminal 10xHis-tag and a C-terminal Myc-tag, facilitating efficient purification and detection procedures. With a purity greater than 85% as determined by SDS-PAGE, our Recombinant Human C1QA protein is available in both liquid and lyophilized powder forms, offering flexibility and reliability for immunology researchers and complement system investigations.

Reconstitution

We recommend that this vial be briefly centrifuged prior to opening to bring the contents to the bottom. Please reconstitute protein in deionized sterile water to a concentration of 0.1-1.0 mg/mL. We recommend to add 5-50% of glycerol (final concentration) and aliquot for long-term storage at -20°C/-80°C. Our default final concentration of glycerol is 50%. Customers could use it as reference.

Shelf Life

The shelf life is related to many factors, storage state, buffer ingredients, storage temperature and the stability of the protein itself. Generally, the shelf life of liquid form is 6 months at -20°C/-80°C. The shelf life of lyophilized form is 12 months at -20°C/-80°C.