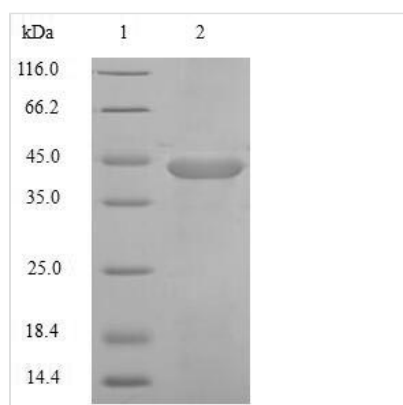




Recombinant Human Probetacellulin [Cleaved into: Betacellulin protein (BTC)]

Product Code	CSB-EP002853HU
Relevance	Growth factor that binds to EGFR, ERBB4 and other EGF receptor family mbers. Potent mitogen for retinal pigment epithelial cells and vascular smooth muscle cells.
Abbreviation	Recombinant Human BTC protein
Storage	The shelf life is related to many factors, storage state, buffer ingredients, storage temperature and the stability of the protein itself. Generally, the shelf life of liquid form is 6 months at -20°C/-80°C. The shelf life of lyophilized form is 12 months at -20°C/-80°C.
Uniprot No.	P35070
Product Type	Recombinant Protein
Immunogen Species	Homo sapiens (Human)
Purity	Greater than 90% as determined by SDS-PAGE.
Sequence	DGNSTRSPETNGLLCGDPEENCAATTTQSKRKGFHSRCPKQYKHYCIKGRRCR FVVAEQTPSCVCDEGYIGARCERVDLFYLRGDRGQILVICLIAMVVFIILVIGVC TCCHPLRKRRKRKKKEEEMETLGKDITPINEDIEETNIA
Research Area	Signal Transduction
Source	E.coli
Target Names	BTC
Expression Region	32-178aa
Notes	Repeated freezing and thawing is not recommended. Store working aliquots at 4°C for up to one week.
Tag Info	N-terminal GST-tagged
Mol. Weight	43.6kDa
Protein Length	Full Length of Mature Protein

Image



(Tris-Glycine gel) Discontinuous SDS-PAGE (reduced) with 5% enrichment gel and 15% separation gel.



Reconstitution

We recommend that this vial be briefly centrifuged prior to opening to bring the contents to the bottom. Please reconstitute protein in deionized sterile water to a concentration of 0.1-1.0 mg/mL. We recommend to add 5-50% of glycerol (final concentration) and aliquot for long-term storage at -20°C/-80°C. Our default final concentration of glycerol is 50%. Customers could use it as reference.

Shelf Life

The shelf life is related to many factors, storage state, buffer ingredients, storage temperature and the stability of the protein itself. Generally, the shelf life of liquid form is 6 months at -20°C/-80°C. The shelf life of lyophilized form is 12 months at -20°C/-80°C.