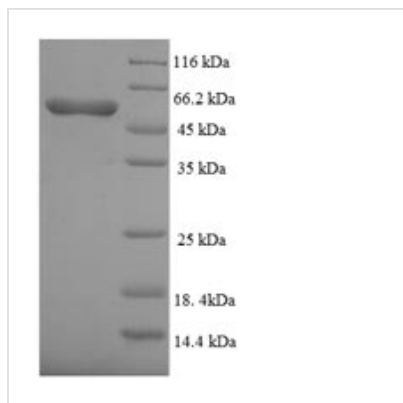




Recombinant Human Bone morphogenetic protein receptor type-1A (BMPR1A), partial

Product Code	CSB-EP002748HU
Relevance	On ligand binding, forms a receptor complex consisting of two type II and two type I transmembrane serine/threonine kinases. Type II receptors phosphorylate and activate type I receptors which autophosphorylate, then bind and activate SMAD transcriptional regulators. Receptor for BMP-2 and BMP-4. Positively regulates chondrocyte differentiation through GDF5 interaction .
Abbreviation	Recombinant Human BMPR1A protein, partial
Storage	The shelf life is related to many factors, storage state, buffer ingredients, storage temperature and the stability of the protein itself. Generally, the shelf life of liquid form is 6 months at -20°C/-80°C. The shelf life of lyophilized form is 12 months at -20°C/-80°C.
Uniprot No.	P36894
Alias	Activin receptor-like kinase 3 ;ALK-3Serine/threonine-protein kinase receptor R5 ;SKR5; CD292
Product Type	Recombinant Protein
Immunogen Species	Homo sapiens (Human)
Purity	Greater than 90% as determined by SDS-PAGE.
Sequence	KHYCKSISSRRRYNRDLEQDEAFIPVGESLKDLDLIDQSQSSGSGSGLPLLVRQRTI AKQIQMVRQVGKGRYGEVWMGKWRGEKVAVKVFFTEEEASWFRETEIYQTV LMRHENILGFIAADIKGTGSWTQLYLITDYHENGSLYDFLKCATLDTRALLKLAY SAACGLCHLHTEIYGTQGKPAIAHRDLKSKNILIKKNGSCCIADLGLAVKFNSDT NEVDVPLNTRVGTKRYMAPEVLDESLNKNHFQPYIMADIYSFGLIIEWEMARRCI TGGIVEEYQLPYYNMVPSPSYEDMREVVCVKRLRPVSNRWNSDECLRAVL KLMSECWAHNPA SRLTALRIKKT LAKMVESQDVKI
Research Area	Cardiovascular
Source	E.coli
Target Names	BMPR1A
Expression Region	177-532aa
Notes	Repeated freezing and thawing is not recommended. Store working aliquots at 4°C for up to one week.
Tag Info	N-terminal 6xHis-SUMO-tagged
Mol. Weight	56.6kDa
Protein Length	Cytoplasmic Domain
Image	



(Tris-Glycine gel) Discontinuous SDS-PAGE (reduced) with 5% enrichment gel and 15% separation gel.

Reconstitution

We recommend that this vial be briefly centrifuged prior to opening to bring the contents to the bottom. Please reconstitute protein in deionized sterile water to a concentration of 0.1-1.0 mg/mL. We recommend to add 5-50% of glycerol (final concentration) and aliquot for long-term storage at -20°C/-80°C. Our default final concentration of glycerol is 50%. Customers could use it as reference.

Shelf Life

The shelf life is related to many factors, storage state, buffer ingredients, storage temperature and the stability of the protein itself. Generally, the shelf life of liquid form is 6 months at -20°C/-80°C. The shelf life of lyophilized form is 12 months at -20°C/-80°C.