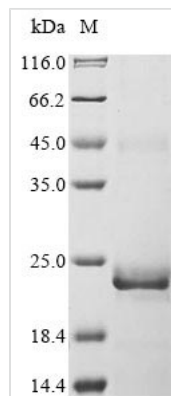




Recombinant Human Bone morphogenetic protein 15 (BMP15)

Product Code	CSB-EP002735HU
Abbreviation	Recombinant Human BMP15 protein
Storage	The shelf life is related to many factors, storage state, buffer ingredients, storage temperature and the stability of the protein itself. Generally, the shelf life of liquid form is 6 months at -20°C/-80°C. The shelf life of lyophilized form is 12 months at -20°C/-80°C.
Uniprot No.	O95972
Form	Liquid or Lyophilized powder
Storage Buffer	If the delivery form is liquid, the default storage buffer is Tris/PBS-based buffer, 5%-50% glycerol. If the delivery form is lyophilized powder, the buffer before lyophilization is Tris/PBS-based buffer, 6% Trehalose.
Product Type	Recombinant Protein
Immunogen Species	Homo sapiens (Human)
Purity	Greater than 90% as determined by SDS-PAGE.
Sequence	QADGISAEVTASSSKHSGPENNQCSLHPFQISFRQLGWDHWIAPPFYTPNYC KGTCLRVLRDGLNSPNHAIQNLINQLVDQSVPRPSCVPYKYVPISVLMIEANGS ILYKEYEGMIAESCTCR
Research Area	Developmental Biology
Source	E.coli
Target Names	BMP15
Expression Region	268-392aa
Notes	Repeated freezing and thawing is not recommended. Store working aliquots at 4°C for up to one week.
Tag Info	N-terminal 10xHis-tagged and C-terminal Myc-tagged
Mol. Weight	21.4 kDa
Protein Length	Full Length of Mature Protein
Image	



(Tris-Glycine gel) Discontinuous SDS-PAGE (reduced) with 5% enrichment gel and 15% separation gel.

Description

The pipeline for the recombinant Human BMP15 protein production in e.coli cells consists of the following consecutive steps: construction of the expression vector encoding the Human BMP15 protein (268-392aa), its transformation into e.coli cells, high-density cultivation and induction of the positive cells, cell lysis, and expression analysis. The protein features a N-terminal 10xHis tag and C-terminal Myc tag fusion. The resulting recombinant Human BMP15 protein is purified from the cell lysate through affinity purification, and its purity is greater than 90% determined by the SDS-PAGE.

Reconstitution

We recommend that this vial be briefly centrifuged prior to opening to bring the contents to the bottom. Please reconstitute protein in deionized sterile water to a concentration of 0.1-1.0 mg/mL. We recommend to add 5-50% of glycerol (final concentration) and aliquot for long-term storage at -20°C/-80°C. Our default final concentration of glycerol is 50%. Customers could use it as reference.

Shelf Life

The shelf life is related to many factors, storage state, buffer ingredients, storage temperature and the stability of the protein itself. Generally, the shelf life of liquid form is 6 months at -20°C/-80°C. The shelf life of lyophilized form is 12 months at -20°C/-80°C.