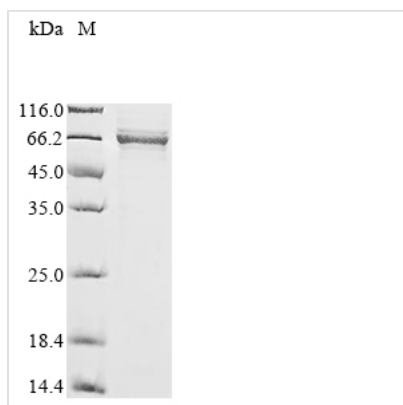




Recombinant Human B-cell lymphoma 6 protein (BCL6), partial

Product Code	CSB-EP002625HU1
Abbreviation	Recombinant Human BCL6 protein, partial
Storage	The shelf life is related to many factors, storage state, buffer ingredients, storage temperature and the stability of the protein itself. Generally, the shelf life of liquid form is 6 months at -20°C/-80°C. The shelf life of lyophilized form is 12 months at -20°C/-80°C.
Uniprot No.	P41182
Storage Buffer	Tris-based buffer,50% glycerol
Product Type	Recombinant Proteins
Immunogen Species	Homo sapiens (Human)
Purity	Greater than 85% as determined by SDS-PAGE.
Sequence	MASPADSCIQFTRHASDVLLNLNRLRSRDILTDVVIVVSREQFRAHKTVLMACS GLFYISFTDQLKCNLSVINLDPEINPEGFCILLDFMYTSRLNLREGNIMAVMATA MYLQMEHVVDTCRKFIKASEAEMVSAIKPPREEFLNSRMLMPQDIMAYRGREV VENNLPLRSAPGCESRAFAPSLYSGLSTPPASYSMYSHLPVSSLLFSDEEFRD VRMPVANPFPKERALPCDSARPVPGEYSRPTLEVSPNVCHSNIYSPKETIPEE ARSDMHYSVAEGLKPAAPSARNAPYFPCDKASKEEERPSSSEDEIALHFEPANA PLNRKGLVSPQSPQKSDCQPNSPTESCSSKNACILQASGSPPAKSPTDPKAC NWKKYKFIVLNSLNQNAKPEGPEQAELGRLSPRAYTAPPACQPPM
Research Area	Epigenetics and Nuclear Signaling
Source	E.coli
Target Names	BCL6
Expression Region	1-418aa
Notes	Repeated freezing and thawing is not recommended. Store working aliquots at 4°C for up to one week.
Tag Info	N-terminal 6xHis-SUMO-tagged
Mol. Weight	59.3 kDa
Protein Length	Partial
Image	



(Tris-Glycine gel) Discontinuous SDS-PAGE (reduced) with 5% enrichment gel and 15% separation gel.

Shelf Life

The shelf life is related to many factors, storage state, buffer ingredients, storage temperature and the stability of the protein itself. Generally, the shelf life of liquid form is 6 months at -20°C/-80°C. The shelf life of lyophilized form is 12 months at -20°C/-80°C.