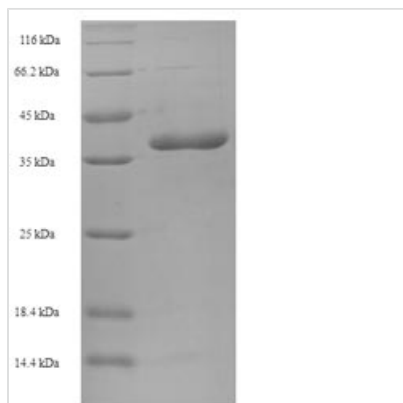


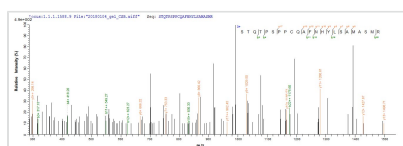


Recombinant Human Bcl-2-like protein 11 (BCL2L11)

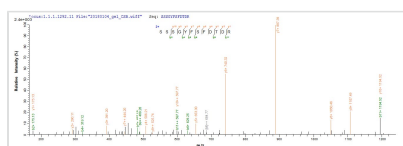
Product Code	CSB-EP002615HU
Relevance	Induces apoptosis and anoikis. Isoform BimL is more potent than isoform BimEL. Isoform Bim-alpha1, isoform Bim-alpha2 and isoform Bim-alpha3 induce apoptosis, although less potent than isoform BimEL, isoform BimL and isoform BimS. Isoform Bim-gamma induces apoptosis. Isoform Bim-alpha3 induces apoptosis possibly through a caspase-mediated pathway. Isoform BimAC and isoform BimABC lack the ability to induce apoptosis.
Abbreviation	Recombinant Human BCL2L11 protein
Storage	The shelf life is related to many factors, storage state, buffer ingredients, storage temperature and the stability of the protein itself. Generally, the shelf life of liquid form is 6 months at -20°C/-80°C. The shelf life of lyophilized form is 12 months at -20°C/-80°C.
Uniprot No.	O43521
Alias	Bcl2-interacting mediator of cell death
Product Type	Recombinant Protein
Immunogen Species	Homo sapiens (Human)
Purity	Greater than 90% as determined by SDS-PAGE.
Sequence	MAKQPSDVSSECDREGRQLQPAERPPQLRPGAPTSLQTEPQGNPEGNHGG EGDSCPHGSPQGPLAPPASPGPFATRSPFLFIMRRSSLLSRSSSGYFSFDTDR SPAPMSCDKSTQTPSPPCQAFNHLYLSAMASMRQAEPADMRPEIWIQAQLRRI GDEFNAYYARRVFLNNYQAAEDHPRMVILRLLRYIVRLVWRMH
Research Area	Cancer
Source	E.coli
Target Names	BCL2L11
Protein Names	Recommended name: Bcl-2-like protein 11 Short name= Bcl2-L-11 Alternative name(s): Bcl2-interacting mediator of cell death
Expression Region	1-198aa
Notes	Repeated freezing and thawing is not recommended. Store working aliquots at 4°C for up to one week.
Tag Info	N-terminal 6xHis-SUMO-tagged
Mol. Weight	38.2kDa
Protein Length	Full Length
Image	



(Tris-Glycine gel) Discontinuous SDS-PAGE (reduced) with 5% enrichment gel and 15% separation gel.



Based on the SEQUEST from database of E.coli host and target protein, the LC-MS/MS Analysis result of CSB-EP002615HU could indicate that this peptide derived from E.coli-expressed Homo sapiens (Human) BCL2L11.



Based on the SEQUEST from database of E.coli host and target protein, the LC-MS/MS Analysis result of CSB-EP002615HU could indicate that this peptide derived from E.coli-expressed Homo sapiens (Human) BCL2L11.

Reconstitution

We recommend that this vial be briefly centrifuged prior to opening to bring the contents to the bottom. Please reconstitute protein in deionized sterile water to a concentration of 0.1-1.0 mg/mL. We recommend to add 5-50% of glycerol (final concentration) and aliquot for long-term storage at -20°C/-80°C. Our default final concentration of glycerol is 50%. Customers could use it as reference.

Shelf Life

The shelf life is related to many factors, storage state, buffer ingredients, storage temperature and the stability of the protein itself.

Generally, the shelf life of liquid form is 6 months at -20°C/-80°C. The shelf life of lyophilized form is 12 months at -20°C/-80°C.