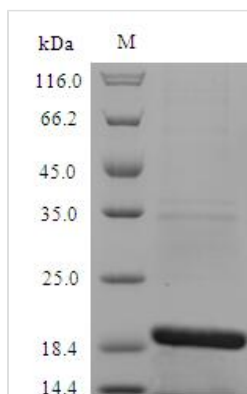




Recombinant Dog Cholinesterase (BCHE)

Product Code	CSB-EP002604DO
Relevance	Esterase with broad substrate specificity. Contributes to the inactivation of the neurotransmitter acetylcholine. Can degrade neurotoxic organophosphate esters .
Abbreviation	Recombinant Dog BCHE protein
Storage	The shelf life is related to many factors, storage state, buffer ingredients, storage temperature and the stability of the protein itself. Generally, the shelf life of liquid form is 6 months at -20°C/-80°C. The shelf life of lyophilized form is 12 months at -20°C/-80°C.
Uniprot No.	P32750
Alias	Acylcholine acylhydrolase;Butyrylcholine esterase;Choline esterase II;Pseudocholinesterase
Product Type	Recombinant Protein
Immunogen Species	Canis lupus familiaris (Dog) (Canis familiaris)
Purity	Greater than 90% as determined by SDS-PAGE.
Sequence	NTDQSFPGFPGSEMWNPNNTDLSCLYLVNWIPTPKPKNATVMIWIYGGGFQ TGTSSLPVYDGKFLARVERVIVSVNYRVGALGFLALPGNPEAPGNLGLFDQQ LALQWVQKNIAAFGGNPKSVTLFGESAGAGSVGLHL
Research Area	Others
Source	E.coli
Target Names	BCHE
Expression Region	1-141aa
Notes	Repeated freezing and thawing is not recommended. Store working aliquots at 4°C for up to one week.
Tag Info	N-terminal 6xHis-tagged
Mol. Weight	19.1kDa
Protein Length	Full Length

Image



(Tris-Glycine gel) Discontinuous SDS-PAGE (reduced) with 5% enrichment gel and 15% separation gel.



Reconstitution

We recommend that this vial be briefly centrifuged prior to opening to bring the contents to the bottom. Please reconstitute protein in deionized sterile water to a concentration of 0.1-1.0 mg/mL. We recommend to add 5-50% of glycerol (final concentration) and aliquot for long-term storage at -20°C/-80°C. Our default final concentration of glycerol is 50%. Customers could use it as reference.

Shelf Life

The shelf life is related to many factors, storage state, buffer ingredients, storage temperature and the stability of the protein itself. Generally, the shelf life of liquid form is 6 months at -20°C/-80°C. The shelf life of lyophilized form is 12 months at -20°C/-80°C.