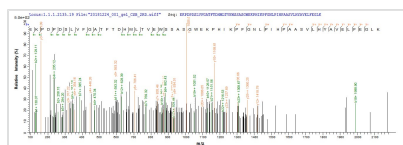




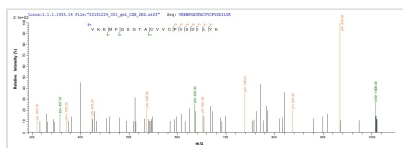
Recombinant Mouse Branched-chain-amino-acid aminotransferase, cytosolic (Bcat1)

Product Code	CSB-EP002600MO
Abbreviation	Recombinant Mouse Bcat1 protein
Storage	The shelf life is related to many factors, storage state, buffer ingredients, storage temperature and the stability of the protein itself. Generally, the shelf life of liquid form is 6 months at -20°C/-80°C. The shelf life of lyophilized form is 12 months at -20°C/-80°C.
Uniprot No.	P24288
Storage Buffer	Tris-based buffer,50% glycerol
Product Type	Recombinant Protein
Immunogen Species	Mus musculus (Mouse)
Purity	Greater than 85% as determined by SDS-PAGE.
Sequence	MKDCSNGCSAPFAGERGSEEVAETFRAKDLIITPATVLKEKPDPDSLVEFGATFT DHMLTVEWSSASGWEPHIKPFGNLPIHPAASVLHYAVELFEGKAFRGVDNK IRLFRPDNLNMDRMCRAVVRTTLPMFDKEELKLCILQLLQIDQEWVPYSTSASLY IRPTFIGTEPSLGVKKPSKALLFVILSPVGPYFSSGSFTPVSLWANPKYIRAWKG GTGDCKMGGNYGASLLAQCEAVENGCCQVLWLYGKDNQITEVGTMNLFYIW INEDGEEELATPPLDGIILPGVTRQSILELAQQWGEFKVCERHMTMDDLATALE GNRVKEMFGSGTACVVCVSDILYKGQMLHIPTMENGPKLASRILGKLTDIQY GRVESDWTEIPL
Research Area	Metabolism
Source	E.coli
Target Names	Bcat1
Protein Names	Recommended name: Branched-chain-amino-acid aminotransferase, cytosolic Short name= BCAT(c) EC= 2.6.1.42 Alternative name(s): Protein ECA39
Expression Region	1-386aa
Notes	Repeated freezing and thawing is not recommended. Store working aliquots at 4°C for up to one week.
Tag Info	N-terminal 10xHis-tagged
Mol. Weight	46.4 kDa
Protein Length	Full Length

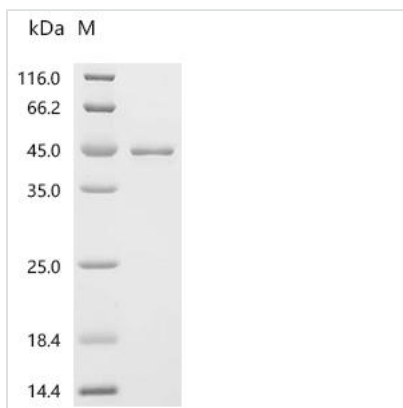
Image



Based on the SEQUEST from database of E.coli host and target protein, the LC-MS/MS Analysis result of CSB-EP002600MO could indicate that this peptide derived from E.coli-expressed Mus musculus (Mouse) Bcat1.



Based on the SEQUEST from database of E.coli host and target protein, the LC-MS/MS Analysis result of CSB-EP002600MO could indicate that this peptide derived from E.coli-expressed Mus musculus (Mouse) Bcat1.



(Tris-Glycine gel) Discontinuous SDS-PAGE (reduced) with 5% enrichment gel and 15% separation gel.

Reconstitution

We recommend that this vial be briefly centrifuged prior to opening to bring the contents to the bottom. Please reconstitute protein in deionized sterile water to a concentration of 0.1-1.0 mg/mL. We recommend to add 5-50% of glycerol (final concentration) and aliquot for long-term storage at -20°C/-80°C. Our default final concentration of glycerol is 50%. Customers could use it as reference.

Shelf Life

The shelf life is related to many factors, storage state, buffer ingredients, storage temperature and the stability of the protein itself. Generally, the shelf life of liquid form is 6 months at -20°C/-80°C. The shelf life of lyophilized form is 12 months at -20°C/-80°C.