

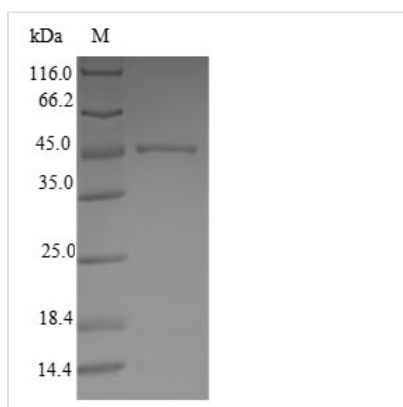


# Recombinant Human ATP synthase subunitd, mitochondrial (ATP5H)

<b>Product Code</b>	CSB-EP002366HU
<b>Relevance</b>	Mitochondrial membrane ATP synthase (F1F0 ATP synthase or Complex V) produces ATP from ADP in the presence of a proton gradient across the membrane which is generated by electron transport complexes of the respiratory chain. F-type ATPases consist of two structural domains, F1 - containing the extramembraneous catalytic core, and F0 - containing the membrane proton channel, linked together by a central stalk and a peripheral stalk. During catalysis, ATP synthesis in the catalytic domain of F1 is coupled via a rotary mechanism of the central stalk subunits to proton translocation. Part of the complex F0 domain and the peripheric stalk, which acts as a stator to hold the catalytic alpha3beta3 subcomplex and subunit a/ATP6 static relative to the rotary elements.
<b>Abbreviation</b>	Recombinant Human ATP5H protein
<b>Storage</b>	The shelf life is related to many factors, storage state, buffer ingredients, storage temperature and the stability of the protein itself. Generally, the shelf life of liquid form is 6 months at -20°C/-80°C. The shelf life of lyophilized form is 12 months at -20°C/-80°C.
<b>Uniprot No.</b>	O75947
<b>Product Type</b>	Recombinant Protein
<b>Immunogen Species</b>	Homo sapiens (Human)
<b>Purity</b>	Greater than 90% as determined by SDS-PAGE.
<b>Sequence</b>	AGRKLALKTIDWVAF AEIIPQNQKAIASSLKSWNETLTSRLAALPENPPAIDWAY YKANVAKAGLVDDFEKKFNALKVPVPEDKYTAQVDAEEKEDVKSCAEWVSLS KARIVEYEKEMEKMKNLIPFDQMTIEDLNEAFPETKLDKKKYPYWPHQPIENL
<b>Research Area</b>	Tags & Cell Markers
<b>Source</b>	E.coli
<b>Target Names</b>	ATP5H
<b>Protein Names</b>	Recommended name: ATP synthase subunit d, mitochondrial Short name= ATPase subunit d
<b>Expression Region</b>	1-161aa
<b>Notes</b>	Repeated freezing and thawing is not recommended. Store working aliquots at 4°C for up to one week.
<b>Tag Info</b>	N-terminal GST-tagged
<b>Mol. Weight</b>	45.4kDa
<b>Protein Length</b>	Full Length



## Image



(Tris-Glycine gel) Discontinuous SDS-PAGE (reduced) with 5% enrichment gel and 15% separation gel.

## Reconstitution

We recommend that this vial be briefly centrifuged prior to opening to bring the contents to the bottom. Please reconstitute protein in deionized sterile water to a concentration of 0.1-1.0 mg/mL. We recommend to add 5-50% of glycerol (final concentration) and aliquot for long-term storage at -20°C/-80°C. Our default final concentration of glycerol is 50%. Customers could use it as reference.

## Shelf Life

The shelf life is related to many factors, storage state, buffer ingredients, storage temperature and the stability of the protein itself. Generally, the shelf life of liquid form is 6 months at -20°C/-80°C. The shelf life of lyophilized form is 12 months at -20°C/-80°C.