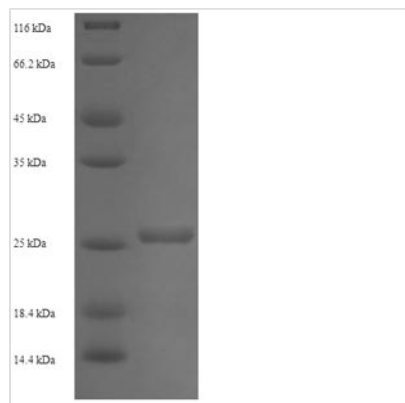




Recombinant Human ADP-ribosylation factor-like protein 4A (ARL4A)

Product Code	CSB-EP002085HU
Relevance	Small GTP-binding protein which cycles between an inactive GDP-bound and an active GTP-bound form, and the rate of cycling is regulated by guanine nucleotide exchange factors (GEF) and GTPase-activating proteins (GAP). GTP-binding protein that does not act as an allosteric activator of the cholera toxin catalytic subunit. Recruits CYTH1, CYTH2, CYTH3 and CYTH4 to the plasma mbrane in GDP-bound form.
Abbreviation	Recombinant Human ARL4A protein
Storage	The shelf life is related to many factors, storage state, buffer ingredients, storage temperature and the stability of the protein itself. Generally, the shelf life of liquid form is 6 months at -20°C/-80°C. The shelf life of lyophilized form is 12 months at -20°C/-80°C.
Uniprot No.	P40617
Product Type	Recombinant Protein
Immunogen Species	Homo sapiens (Human)
Purity	Greater than 90% as determined by SDS-PAGE.
Sequence	GNGLSDQTSILSNLPSFQSFHIVILGLDCAGKTTVLYRLQFNEFVNTVPTKGFNT EKIKVTLGNSKTVTFHFWDVGGQEKLRPLWKS YTRCTDGIVFVDSVDVERM EEAKTELHKITRISENQGVPLIVANKQDLRNSLSLSEIEKLLAMGELSSSTPWH LQPTCAIIGDGLKEGLEKLHDMIKRRKMLRQQKKKR
Research Area	Signal Transduction
Source	E.coli
Target Names	ARL4A
Expression Region	2-200aa
Notes	Repeated freezing and thawing is not recommended. Store working aliquots at 4°C for up to one week.
Tag Info	N-terminal 6xHis-tagged
Mol. Weight	26.5kDa
Protein Length	Full Length of Mature Protein
Image	



(Tris-Glycine gel) Discontinuous SDS-PAGE (reduced) with 5% enrichment gel and 15% separation gel.

Reconstitution

We recommend that this vial be briefly centrifuged prior to opening to bring the contents to the bottom. Please reconstitute protein in deionized sterile water to a concentration of 0.1-1.0 mg/mL. We recommend to add 5-50% of glycerol (final concentration) and aliquot for long-term storage at -20°C/-80°C. Our default final concentration of glycerol is 50%. Customers could use it as reference.

Shelf Life

The shelf life is related to many factors, storage state, buffer ingredients, storage temperature and the stability of the protein itself. Generally, the shelf life of liquid form is 6 months at -20°C/-80°C. The shelf life of lyophilized form is 12 months at -20°C/-80°C.