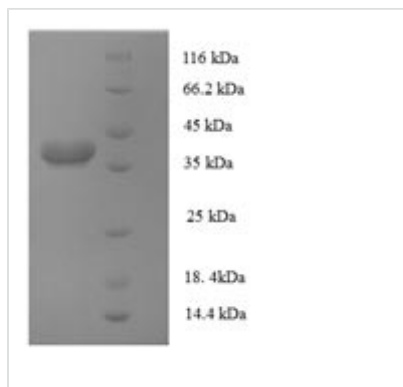




# Recombinant Human AP-1 complex subunit sigma-3 (AP1S3)

<b>Product Code</b>	CSB-EP001868HU
<b>Relevance</b>	Subunit of clathrin-associated adaptor protein complex 1 that plays a role in protein sorting in the late-Golgi/trans-Golgi network (TGN) and/or endosomes. The AP complexes mediate both the recruitment of clathrin to mbranes and the recognition of sorting signals within the cytosolic tails of transmembrane cargo molecules. Involved in TLR3 trafficking .
<b>Abbreviation</b>	Recombinant Human AP1S3 protein
<b>Storage</b>	The shelf life is related to many factors, storage state, buffer ingredients, storage temperature and the stability of the protein itself. Generally, the shelf life of liquid form is 6 months at -20°C/-80°C. The shelf life of lyophilized form is 12 months at -20°C/-80°C.
<b>Uniprot No.</b>	Q96PC3
<b>Alias</b>	Adaptor protein complex AP-1 subunit sigma-1C;Adaptor-related protein complex 1 subunit sigma-1C;Clathrin assembly protein complex 1 sigma-1C small chain;Golgi adaptor HA1/AP1 adaptin sigma-1C subunit;Sigma 1C subunit of AP-1 clathrin;Sigma-adaptin 1C;Sigma1C-adaptin
<b>Product Type</b>	Recombinant Protein
<b>Immunogen Species</b>	Homo sapiens (Human)
<b>Purity</b>	Greater than 90% as determined by SDS-PAGE.
<b>Sequence</b>	MIHFILLFSRQGKLRQLQKWIYITLPDKERKKITREIVQIILSRGHRTSSFVDWKELKLVYKRYASLYFCCAIEHQDNELLTLEIVHRYVELLDKYFGNTWPFARA
<b>Research Area</b>	Others
<b>Source</b>	E.coli
<b>Target Names</b>	AP1S3
<b>Expression Region</b>	1-104aa
<b>Notes</b>	Repeated freezing and thawing is not recommended. Store working aliquots at 4°C for up to one week.
<b>Tag Info</b>	N-terminal GST-tagged
<b>Mol. Weight</b>	39.7kDa
<b>Protein Length</b>	Full Length of Isoform 3
<b>Image</b>	



(Tris-Glycine gel) Discontinuous SDS-PAGE (reduced) with 5% enrichment gel and 15% separation gel.

## Reconstitution

We recommend that this vial be briefly centrifuged prior to opening to bring the contents to the bottom. Please reconstitute protein in deionized sterile water to a concentration of 0.1-1.0 mg/mL. We recommend to add 5-50% of glycerol (final concentration) and aliquot for long-term storage at -20°C/-80°C. Our default final concentration of glycerol is 50%. Customers could use it as reference.

## Shelf Life

The shelf life is related to many factors, storage state, buffer ingredients, storage temperature and the stability of the protein itself.

Generally, the shelf life of liquid form is 6 months at -20°C/-80°C. The shelf life of lyophilized form is 12 months at -20°C/-80°C.