



Recombinant Rat Aminopeptidase N (Anpep), partial

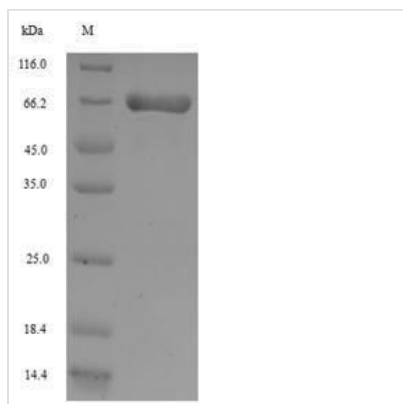
Product Code	CSB-EP001827RA
Relevance	Broad specificity aminopeptidase. Plays a role in the final digestion of peptides generated from hydrolysis of proteins by gastric and pancreatic proteases. May be involved in the metabolism of regulatory peptides of diverse cell types, responsible for the processing of peptide hormones, such as angiotensin III and IV, neuropeptides, and chemokines and involved the cleavage of peptides bound to major histocompatibility complex class II molecules of antigen presenting cells. May have a role in angiogenesis
Abbreviation	Recombinant Rat Anpep protein, partial
Storage	The shelf life is related to many factors, storage state, buffer ingredients, storage temperature and the stability of the protein itself. Generally, the shelf life of liquid form is 6 months at -20°C/-80°C. The shelf life of lyophilized form is 12 months at -20°C/-80°C.
Uniprot No.	P15684
Alias	Short name: AP-N Short name: rAPN Alternative name(s): Alanyl aminopeptidase Aminopeptidase M Short name: AP-M Kidney Zn peptidase Short name: KZP Microsomal aminopeptidase CD_antigen: CD13
Product Type	Recombinant Protein
Immunogen Species	Rattus norvegicus (Rat)
Purity	Greater than 90% as determined by SDS-PAGE.
Sequence	YAQEKNRNAENSAIAPTLPGSTSATTSTTNPAIDESKPWNQYRLPKTLIPDSYQ VTLRPYLTPNEQGLYIFKGSSTVRFTCNETTNVIIHSHKKNLYTNKGNHRVALRA LGDTPAPNIDTTELVERTEYLVVHLQGSLVKGHQYEMDSEFQGEADLAGFY RSEYMEGGNKKVVATTQMQAADARKSFPCFDEPAMKASFNITLIHPNNLTALS NMLPKDSRTLQEDPSWNVTEFHPTPKMSTYLLAYIVSEFKYVEAVSPNRVQIRI WARPSAIDEGHGDYALQVTGPILNFFAQHYNTAYPLEKSDQIALPDFNAGAME NWGLVTYRESALVFDPQSSSISNKERVVTIAHELAHQWFGNLVTDVWVNDL WLNEGFASYVEFLGADYAEPTWNLKDLIVLNDVYRVMVDAVDAVDAVDAVDAVDAV EVNTPAQISELFDSTITY
Research Area	Immunology
Source	E.coli
Target Names	Anpep
Expression Region	33-476aa
Notes	Repeated freezing and thawing is not recommended. Store working aliquots at 4°C for up to one week.
Tag Info	N-terminal 6xHis-SUMO-tagged



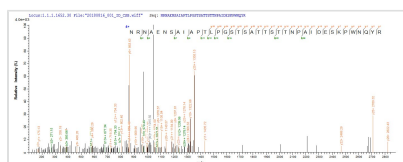
Mol. Weight 65.8kDa

Protein Length Partial

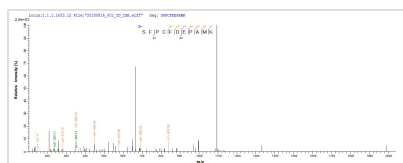
Image



(Tris-Glycine gel) Discontinuous SDS-PAGE (reduced) with 5% enrichment gel and 15% separation gel.



Based on the SEQUEST from database of E.coli host and target protein, the LC-MS/MS Analysis result of CSB-EP001827RA could indicate that this peptide derived from E.coli-expressed *Rattus norvegicus* (Rat) Anpep.



Based on the SEQUEST from database of E.coli host and target protein, the LC-MS/MS Analysis result of CSB-EP001827RA could indicate that this peptide derived from E.coli-expressed *Rattus norvegicus* (Rat) Anpep.

Reconstitution

We recommend that this vial be briefly centrifuged prior to opening to bring the contents to the bottom. Please reconstitute protein in deionized sterile water to a concentration of 0.1-1.0 mg/mL. We recommend to add 5-50% of glycerol (final concentration) and aliquot for long-term storage at -20°C/-80°C. Our default final concentration of glycerol is 50%. Customers could use it as reference.

Shelf Life

The shelf life is related to many factors, storage state, buffer ingredients, storage temperature and the stability of the protein itself. Generally, the shelf life of liquid form is 6 months at -20°C/-80°C. The shelf life of lyophilized form is 12 months at -20°C/-80°C.