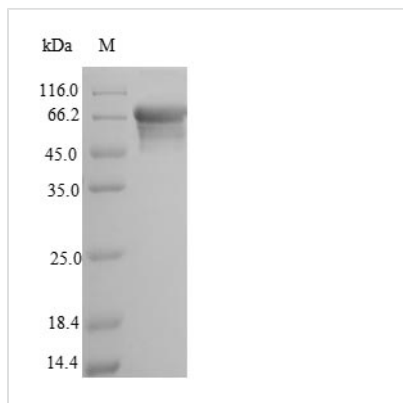




Recombinant Rat Alkaline phosphatase, tissue-nonspecific isozyme (Alpl)

Product Code	CSB-EP001631RA
Abbreviation	Recombinant Rat Alpl protein
Storage	The shelf life is related to many factors, storage state, buffer ingredients, storage temperature and the stability of the protein itself. Generally, the shelf life of liquid form is 6 months at -20°C/-80°C. The shelf life of lyophilized form is 12 months at -20°C/-80°C.
Uniprot No.	P08289
Alias	Alkaline phosphatase liver/bone/kidney isozyme
Product Type	Recombinant Protein
Immunogen Species	Rattus norvegicus (Rat)
Purity	Greater than 90% as determined by SDS-PAGE.
Sequence	FVPEKEKDPSYWRQQAQETLKNALKLQKLNTNVAKNIIMFLGDGMGVSTVTAA RILKGQLHHNTGEETRLEMDKFPFVALSKTYNTNAQVPDSAGTATAYLCGVKA NEGTVGVSAAATERTRCNTTQGNEVTSILRWAKDAGKSVGIVTTTRVNHATPSA AYAHSADRDWYSDNEMPPEALSQGCKDIAYQLMHNIDIDVIMGGGRKYMYP KNRTDVEYELDEKARGTRLDGLDLISIWKSFKPRHKHSHYVWNRTELLALDPS RVDYLLGLFEPGDMQYELNRNLTDPSSLSEMVEVALRILTKNPKGFFLLVEGG RIDHGHHEGKAKQALHEAVEMDEAIGKAGTMTSQKDTLTVVTADHSHVFTFG GYTPRGNSIFGLAPMVSDTDKKPFTAILYGNPGYKVVDGERENVSMVDYAH NNYQAQSAVPLRHETHGGEDVAVFAKGPMALLHGVHEQNYIPHYMAYASCI GANLDHCAWAS
Research Area	Cell Biology
Source	E.coli
Target Names	Alpl
Protein Names	Recommended name: Alkaline phosphatase, tissue-nonspecific isozyme Short name= AP-TNAP Short name= TNSALP EC= 3.1.3.1 Alternative name(s): Alkaline phosphatase liver/bone/kidney isozyme
Expression Region	18-501aa
Notes	Repeated freezing and thawing is not recommended. Store working aliquots at 4°C for up to one week.
Tag Info	N-terminal 6xHis-SUMO-tagged
Mol. Weight	69.5kDa
Protein Length	Full Length of Mature Protein
Image	



(Tris-Glycine gel) Discontinuous SDS-PAGE (reduced) with 5% enrichment gel and 15% separation gel.

Reconstitution

We recommend that this vial be briefly centrifuged prior to opening to bring the contents to the bottom. Please reconstitute protein in deionized sterile water to a concentration of 0.1-1.0 mg/mL. We recommend to add 5-50% of glycerol (final concentration) and aliquot for long-term storage at -20°C/-80°C. Our default final concentration of glycerol is 50%. Customers could use it as reference.

Shelf Life

The shelf life is related to many factors, storage state, buffer ingredients, storage temperature and the stability of the protein itself. Generally, the shelf life of liquid form is 6 months at -20°C/-80°C. The shelf life of lyophilized form is 12 months at -20°C/-80°C.