

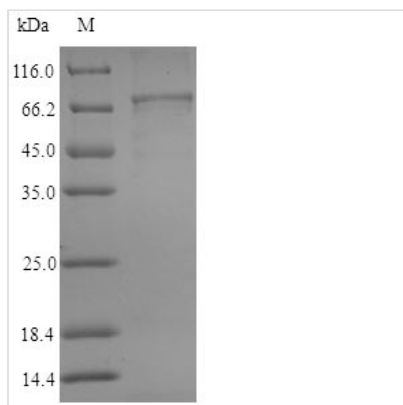


# Recombinant Human Retinaldehyde dehydrogenase 3 (ALDH1A3)

<b>Product Code</b>	CSB-EP001567HU
<b>Relevance</b>	Recognizes as substrates free retinal and cellular retinol-binding protein-bound retinal. Seems to be the key enzyme in the formation of an RA gradient along the dorso-ventral axis during the early eye development and also in the development of the olfactory system (By similarity).
<b>Abbreviation</b>	Recombinant Human ALDH1A3 protein
<b>Storage</b>	The shelf life is related to many factors, storage state, buffer ingredients, storage temperature and the stability of the protein itself. Generally, the shelf life of liquid form is 6 months at -20°C/-80°C. The shelf life of lyophilized form is 12 months at -20°C/-80°C.
<b>Uniprot No.</b>	P47895
<b>Product Type</b>	Recombinant Proteins
<b>Immunogen Species</b>	Homo sapiens (Human)
<b>Purity</b>	Greater than 90% as determined by SDS-PAGE.
<b>Sequence</b>	ATANGAVENGQPDRKPPALPRPIRNLEVKFTKIFINNEWHESKSGKKFATCNP STREQICEVEEGDKPDVDKAVEAAQVAFQRGSPWRRDLALSRGRLLHQLADL VERDRATLAALETMDTGKPFLLHAFFIDLEGCIRTLRYFAGWADKIQQKTIPTDD NVVCFTRHEPIGVCGAITPWNFPLLMLVWKLAPALCCGNTMVLKPAEQTPLTA LYLGSLIKEAGFPPGVVNIVPGFGPTVGAAISSHPQINKIAFTGSTEVGKLVKEA ASRSNLKRVTLLEGGKNPCIVCADADLDLAVECAHQGVFFNQGCCTAASRV FVEEQVYSEFVRRSVEYAKKRPVGDVFKTEQGPQIDQKQFDKILELIESGK KEGAKLECGGSAMEDKGLFIKPTVFSEVTDNMRIAKEEIFGPVQPILKFKSIEEV IKRANSTDYGLTAAVFTKNLKDALKLASALESGTVWINCYNALYAQAPFGGFK MSGNGRELGEYALAEYTEVKTVTIKLGDKNP
<b>Research Area</b>	Others
<b>Source</b>	E.coli
<b>Target Names</b>	ALDH1A3
<b>Protein Names</b>	Recommended name: Aldehyde dehydrogenase family 1 member A3 EC=1.2.1.5 Alternative name(s): Aldehyde dehydrogenase 6 Retinaldehyde dehydrogenase 3 Short name= RALDH-3 Short name= RaLDH3
<b>Expression Region</b>	2-512aa
<b>Notes</b>	Repeated freezing and thawing is not recommended. Store working aliquots at 4°C for up to one week.
<b>Tag Info</b>	N-terminal 6xHis-SUMO-tagged
<b>Mol. Weight</b>	72.0kDa
<b>Protein Length</b>	Full Length of Mature Protein



## Image



(Tris-Glycine gel) Discontinuous SDS-PAGE (reduced) with 5% enrichment gel and 15% separation gel.

## Shelf Life

The shelf life is related to many factors, storage state, buffer ingredients, storage temperature and the stability of the protein itself.

Generally, the shelf life of liquid form is 6 months at -20°C/-80°C. The shelf life of lyophilized form is 12 months at -20°C/-80°C.