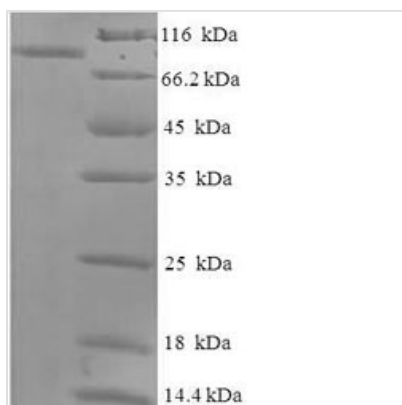




Recombinant *Macaca fascicularis* albumin (ALB)

Product Code	CSB-EP001561MOV
Relevance	Serum albumin, the main protein of plasma, has a good binding capacity for water, Ca ²⁺ , Na ⁺ , K ⁺ , fatty acids, hormones, bilirubin and drugs. Its main function is the regulation of the colloidal osmotic pressure of blood. Major zinc transporter in plasma, typically binds about 80% of all plasma zinc.
Abbreviation	Recombinant Cynomolgus monkey ALB protein
Storage	The shelf life is related to many factors, storage state, buffer ingredients, storage temperature and the stability of the protein itself. Generally, the shelf life of liquid form is 6 months at -20°C/-80°C. The shelf life of lyophilized form is 12 months at -20°C/-80°C.
Uniprot No.	A2V9Z4
Product Type	Recombinant Proteins
Immunogen Species	<i>Macaca fascicularis</i> (Crab-eating macaque) (<i>Cynomolgus</i> monkey)
Purity	Greater than 90% as determined by SDS-PAGE.
Sequence	DTHKSEVAHRFKDLGEEHFKGLVLVAFSQYLQQCPFEEHVKLVNEVTEFAKTC VADESAENCDKSLHTLFGDKLCTVATLRETYGEMADCCAKQEPERNECFLQH KDDNPPLPPLVRPEVDVMCTAFHDNEATFLKKYLYEVARRHPYFYAPELLFFA ARYKAAFAECCQAADKAACLLPKLDELDEGKASSAKQRLKCASLQKFGDRA FKAWAVARLSQKFPKAEFAEVSKLVTDLTQVHTECCHGDLLECADDRADLAKY MCENQDSISSKLKECCDKPLLEKSHCLAEVENDEMPADLPSLAADYVESKDVC KNYAEAKDVFLGMFLYFYARRHPDYSVMLLLRLAKAYEATLEKCCAAADPHEC YAKVFDEFQPLVEEPQNLVKQNCLEFEQLGEYKFQNALLVRYTKKVPQVSTPT LVEVSRNLGKVGAKCCKLPEAKRMPCAEDYLSVVLNRLCVLHEKTPVSEKVTK CCTESLVNRRPCFSALELDEAYVPKAFNAETFTFHADMCTLSEKEKQVKKQTA LVELVKHKPKATKEQLKGVMDNFAAFVEKCKADDKEACFAEEGPKFVAASQ AALA
Research Area	Cardiovascular
Source	<i>E. coli</i>
Target Names	ALB
Expression Region	25-608aa
Notes	Repeated freezing and thawing is not recommended. Store working aliquots at 4°C for up to one week.
Tag Info	N-terminal 6xHis-SUMO-tagged
Mol. Weight	82.0kDa
Protein Length	Full Length of Mature Protein
Image	



(Tris-Glycine gel) Discontinuous SDS-PAGE (reduced) with 5% enrichment gel and 15% separation gel.

Shelf Life

The shelf life is related to many factors, storage state, buffer ingredients, storage temperature and the stability of the protein itself. Generally, the shelf life of liquid form is 6 months at -20°C/-80°C. The shelf life of lyophilized form is 12 months at -20°C/-80°C.