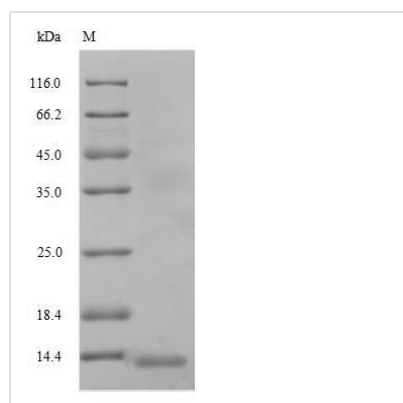




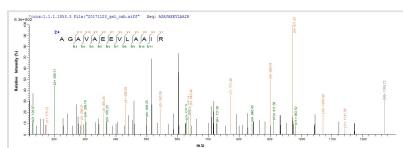
Recombinant Human ATP-dependent translocase ABCB1 (ABCB1), partial

Product Code	CSB-EP001046HU1
Relevance	Energy-dependent efflux pump responsible for decreased drug accumulation in multidrug-resistant cells.
Abbreviation	Recombinant Human ABCB1 protein, partial
Storage	The shelf life is related to many factors, storage state, buffer ingredients, storage temperature and the stability of the protein itself. Generally, the shelf life of liquid form is 6 months at -20°C/-80°C. The shelf life of lyophilized form is 12 months at -20°C/-80°C.
Uniprot No.	P08183
Alias	ATP-binding cassette sub-family B member 1;P-glycoprotein 1; CD243
Product Type	Recombinant Protein
Immunogen Species	Homo sapiens (Human)
Purity	Greater than 90% as determined by SDS-PAGE.
Sequence	LSSFTDKELLAYAKAGAVAAEEVLAAIRTVIAFGGQKKELERYNKNLEEAKRIGIK KAITANI
Research Area	Transport
Source	E.coli
Target Names	ABCB1
Expression Region	236-297aa
Notes	Repeated freezing and thawing is not recommended. Store working aliquots at 4°C for up to one week.
Tag Info	N-terminal 6xHis-tagged
Mol. Weight	10.8kDa
Protein Length	Partial

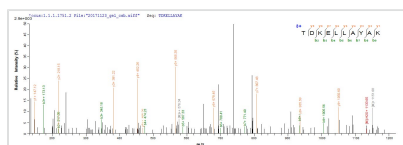
Image



(Tris-Glycine gel) Discontinuous SDS-PAGE (reduced) with 5% enrichment gel and 15% separation gel.



Based on the SEQUEST from database of E.coli host and target protein, the LC-MS/MS Analysis result of CSB-RP117374h(A6) could indicate that this peptide derived from E.coli-expressed Homo sapiens (Human) ABCB1.



Based on the SEQUEST from database of E.coli host and target protein, the LC-MS/MS Analysis result of CSB-RP117374h(A6) could indicate that this peptide derived from E.coli-expressed Homo sapiens (Human) ABCB1.

Description

Advance your research in transport processes with our high-quality Recombinant Human ABCB1 protein. This partial protein (236-297aa) is derived from E.coli, a reliable expression system for robust protein production. Designed with an N-terminal 6xHis-tag, the protein enables efficient purification and detection, ensuring that you have a reliable and consistent product for your research endeavors.

Our Recombinant Human ABCB1 protein, also known as ATP-dependent translocase ABCB1 or CD243, offers a purity greater than 90% as determined by SDS-PAGE. Available in both liquid and lyophilized powder forms, this exceptional protein is designed to support your research in the transport field, allowing you to explore the complexities of ATP-dependent transport mechanisms with precision and confidence.

Reconstitution

We recommend that this vial be briefly centrifuged prior to opening to bring the contents to the bottom. Please reconstitute protein in deionized sterile water to a concentration of 0.1-1.0 mg/mL. We recommend to add 5-50% of glycerol (final concentration) and aliquot for long-term storage at -20°C/-80°C. Our default final concentration of glycerol is 50%. Customers could use it as reference.

Shelf Life

The shelf life is related to many factors, storage state, buffer ingredients, storage temperature and the stability of the protein itself. Generally, the shelf life of liquid form is 6 months at -20°C/-80°C. The shelf life of lyophilized form is 12 months at -20°C/-80°C.