

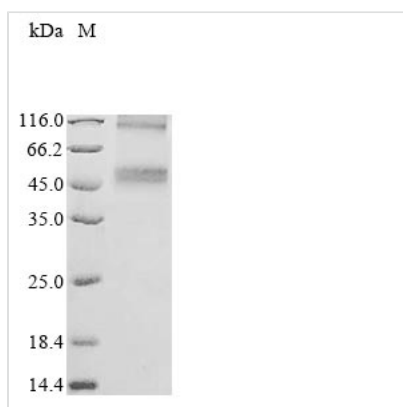


Recombinant Human Cystine/glutamate transporter (SLC7A11) (Active)

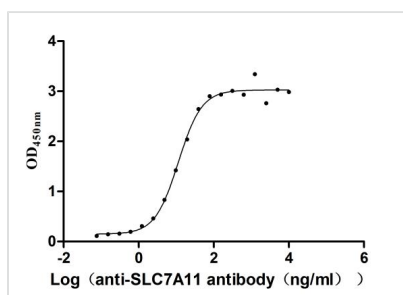
Product Code	CSB-CF892171HU(A4)
Abbreviation	Recombinant Human SLC7A11 protein (Active)
Storage	The shelf life is related to many factors, storage state, buffer ingredients, storage temperature and the stability of the protein itself. Generally, the shelf life of liquid form is 6 months at -20°C/-80°C. The shelf life of lyophilized form is 12 months at -20°C/-80°C.
Uniprot No.	Q9UPY5
Form	Liquid or Lyophilized powder
Storage Buffer	If the delivery form is liquid, the default storage buffer is Tris/PBS-based buffer, 5%-50% glycerol.If the delivery form is lyophilized powder, the buffer before lyophilization is Tris/PBS-based buffer, 6% Trehalose.
Product Type	Recombinant Human Cystine/glutamate transporter(SLC7A11)
Immunogen Species	Homo sapiens (Human)
Biological Activity	Measured by its binding ability in a functional ELISA. Immobilized Human SLC7A11 at 2 µg/mL can bind Anti-SLC7A11 recombinant antibody (CSB-RA892171MA1HU), the EC50 is 9.452-13.79 ng/mL.
Purity	Greater than 90% as determined by SDS-PAGE.
Sequence	MVRKPVVSTISKGGYLQGNVNGRLPSLGNKEPPGQEKVQLKRKVTLLRGVSIIGTIIAGIFISPKGVLQNTGSGVMSLTIWTVCGVLSLFGALSYAELGTTIKKSGGHYTYILEVFGPLPAFVRVWVELLIIRPAATAVISLAFGRYILEPFFIQCEIPELAIKLI TAVGITVVMVLNSMSVSWSARIQIFLTCKLTAILIIVPGVMQLIKGQTQNFKDA FSGRDSSITRLPLAFYYGMYAYAGWFWYLN FVTEEEVENPEKTIPLAICISMAIVTIG YVLTNVAYFTTINAEELLSNAVAVTFSERLLGNFSLAVPIFVALSCFGSMNGGV FAVSRLFYVASREGHLPEILSMIHVRKHTPLPAVIVLHPLTMIMLFSGDLDSSLN FLSFARWLFGLAVAGLIYLRYPKCPDMHRPFPKVPPLFIPALFSFTCLFMVALSLYS DPFSTGIGFVITLTGVPAYYLFIIWDKKPRWFRIMSEKITRTLQIILEVVPEEDKL
Research Area	Cell Biology
Source	in vitro E.coli expression system
Target Names	SLC7A11
Expression Region	1-501aa
Notes	Repeated freezing and thawing is not recommended. Store working aliquots at 4°C for up to one week.
Tag Info	N-terminal 10xHis-tagged
Mol. Weight	58.2 kDa
Protein Length	Full Length



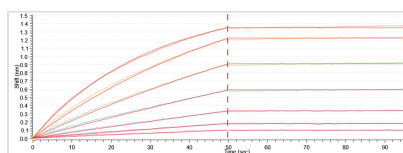
Image



(Tris-Glycine gel) Discontinuous SDS-PAGE (reduced) with 5% enrichment gel and 15% separation gel.



Activity
Measured by its binding ability in a functional ELISA. Immobilized Human SLC7A11 at 2μg/mL can bind Anti-SLC7A11 recombinant antibody (CSB-RA892171MA1HU), the EC₅₀ is 9.452-13.79 ng/mL.



Loaded Anti-Human SLC7A11 Antibody (CSB-RA892171MA1HU) on 96-Flat plate, can bind Human SLC7A11, with an affinity constant of ?1 pM as determined in BLI assay (Gator Prime).

Reconstitution

We recommend that this vial be briefly centrifuged prior to opening to bring the contents to the bottom. Please reconstitute protein in deionized sterile water to a concentration of 0.1-1.0 mg/mL. We recommend to add 5-50% of glycerol (final concentration) and aliquot for long-term storage at -20°C/-80°C. Our default final concentration of glycerol is 50%. Customers could use it as reference.

Shelf Life

The shelf life is related to many factors, storage state, buffer ingredients, storage temperature and the stability of the protein itself. Generally, the shelf life of liquid form is 6 months at -20°C/-80°C. The shelf life of lyophilized form is 12 months at -20°C/-80°C.