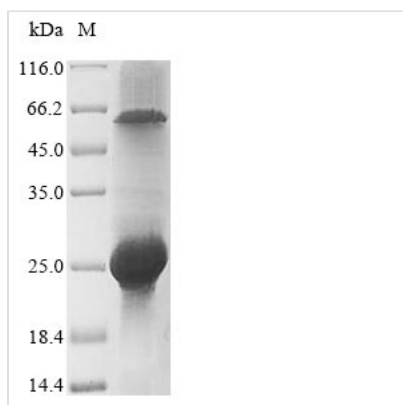


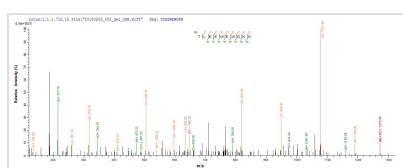


Recombinant Rotavirus A Non-structural glycoprotein 4, partial

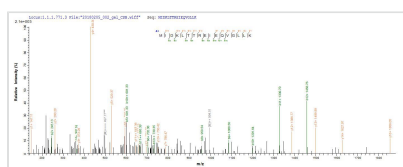
Product Code	CSB-CF889507RFU
Relevance	Involved in virus morphogenesis. Functions as a receptor for the immature double-layered inner capsid particle (ICP) which transiently buds into the lumen of the rough endoplasmic reticulum during viral maturation Enterotoxin that causes a phospholipase C-dependent elevation of the intracellular calcium concentration in host intestinal mucosa cells. Increased concentration of intracellular calcium disrupts the cytoskeleton and the tight junctions, raising the paracellular permeability. Potentiates chloride ion secretion through a calcium ion-dependent signaling pathway, inducing age-dependent diarrhea. To perform this enterotoxigenic role in vivo, NSP4 is probably released from infected enterocytes in a soluble form capable of diffusing within the intestinal lumen and interacting with the plasma membrane receptors on neighboring epithelial cells. Possible receptors for NSP4 are alpha-1/beta-1 and alpha-2/beta-1 integrin heterodimers
Abbreviation	Recombinant Rotavirus A Non-structural glycoprotein 4 protein, partial
Storage	The shelf life is related to many factors, storage state, buffer ingredients, storage temperature and the stability of the protein itself. Generally, the shelf life of liquid form is 6 months at -20°C/-80°C. The shelf life of lyophilized form is 12 months at -20°C/-80°C.
Uniprot No.	Q9PYC8
Product Type	Transmembrane Protein
Immunogen Species	Rotavirus A (isolate RVA/Cow/United States/B223/1983/G10P8[11]) (RV-A)
Purity	Greater than 85% as determined by SDS-PAGE.
Sequence	PTMKIALKTSKCSYKVVKYCIVTIFNTLLKLAGYKEQITTKDEIEKQMERVVKEM RRHFKMIDKLTTREIEQVGLLKRIHDKLDIRAVDEIDMTKEINQKNVRTLEEW EWGKNPYEPKEVTAAM
Research Area	Others
Source	in vitro E.coli expression system
Protein Names	NCVP5 NS28
Expression Region	52-175aa
Notes	Repeated freezing and thawing is not recommended. Store working aliquots at 4°C for up to one week.
Tag Info	N-terminal 6xHis-tagged and C-terminal Myc-tagged
Mol. Weight	21.7 kDa
Protein Length	Cytoplasmic Domain
Image	



(Tris-Glycine gel) Discontinuous SDS-PAGE (reduced) with 5% enrichment gel and 15% separation gel.



Based on the SEQUEST from database of E.coli host and target protein, the LC-MS/MS Analysis result of CSB-CF889507RFU could indicate that this peptide derived from E.coli-expressed Rotavirus A (isolate RVA/Cow/United States/B223/1983/G10P8[11 J]) (RV-A) glycoprotein 4.



Based on the SEQUEST from database of E.coli host and target protein, the LC-MS/MS Analysis result of CSB-CF889507RFU could indicate that this peptide derived from E.coli-expressed Rotavirus A (isolate RVA/Cow/United States/B223/1983/G10P8[11 J]) (RV-A) glycoprotein 4.

Reconstitution

We recommend that this vial be briefly centrifuged prior to opening to bring the contents to the bottom. Please reconstitute protein in deionized sterile water to a concentration of 0.1-1.0 mg/mL. We recommend to add 5-50% of glycerol (final concentration) and aliquot for long-term storage at -20°C/-80°C. Our default final concentration of glycerol is 50%. Customers could use it as reference.

Shelf Life

The shelf life is related to many factors, storage state, buffer ingredients, storage temperature and the stability of the protein itself. Generally, the shelf life of liquid form is 6 months at -20°C/-80°C. The shelf life of lyophilized form is 12 months at -20°C/-80°C.