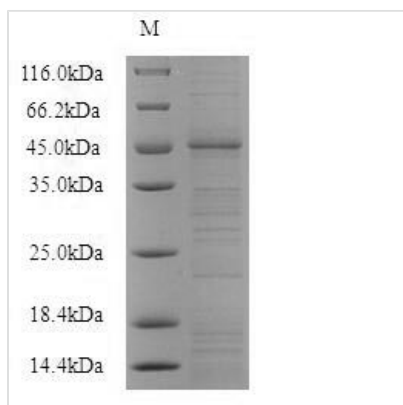




# Recombinant Mouse P2X purinoceptor 4 (P2rx4), partial

|                          |  |
|--------------------------|--|
| <b>Product Code</b>      | CSB-CF884934MOa2   |
| <b>Relevance</b>         | Receptor for ATP that acts as a ligand-gated ion channel. This receptor is insensitive to the antagonists PPADS and suramin (By similarity).   |
| <b>Abbreviation</b>      | Recombinant Mouse P2rx4 protein, partial   |
| <b>Storage</b>           | The shelf life is related to many factors, storage state, buffer ingredients, storage temperature and the stability of the protein itself. Generally, the shelf life of liquid form is 6 months at -20°C/-80°C. The shelf life of lyophilized form is 12 months at -20°C/-80°C.                                |
| <b>Uniprot No.</b>       | Q9JJX6   |
| <b>Product Type</b>      | Transmembrane Protein  |
| <b>Immunogen Species</b> | Mus musculus (Mouse)   |
| <b>Purity</b>            | Greater than 90% as determined by SDS-PAGE.  |
| <b>Sequence</b>          | QETDSVVSSVTTKAKGVAVTNTSQLGFRWDVADYVVPAQEENSLFIMTNMIV<br>TVNQTQGTCPDIPDKTSICDS DANCTLGSSDTHSSGIGTGRCVPFNASVKTCE<br>VAAWCPVENDAGVPTPAFLKAAENFTLLVKNNIWYPKFNFSKRNLPNITTSYL<br>KSCIYNARTDPFCPIFRLGQIVADAGHSFQEMAVEGGIMGIQIKWDCNLDRAAS<br>HCLPRYSFRRLDTRDLEHNVSPGYNFRFAKYRDLAGNEQRTLTKAYGIRFDII<br>VFGKAGKFDIIPTMIN |
| <b>Research Area</b>     | others   |
| <b>Source</b>            | in vitro E.coli expression system  |
| <b>Target Names</b>      | P2rx4  |
| <b>Protein Names</b>     | ATP receptor Purinergic receptor   |
| <b>Expression Region</b> | 55-338aa   |
| <b>Notes</b>             | Repeated freezing and thawing is not recommended. Store working aliquots at 4°C for up to one week.  |
| <b>Tag Info</b>          | N-terminal 6xHis-SUMO-tagged   |
| <b>Mol. Weight</b>       | 47.5kDa  |
| <b>Protein Length</b>    | Extracellular Domain   |
| <b>Image</b>             |  |



(Tris-Glycine gel) Discontinuous SDS-PAGE (reduced) with 5% enrichment gel and 15% separation gel.

### Reconstitution

We recommend that this vial be briefly centrifuged prior to opening to bring the contents to the bottom. Please reconstitute protein in deionized sterile water to a concentration of 0.1-1.0 mg/mL. We recommend to add 5-50% of glycerol (final concentration) and aliquot for long-term storage at -20°C/-80°C. Our default final concentration of glycerol is 50%. Customers could use it as reference.

### Shelf Life

The shelf life is related to many factors, storage state, buffer ingredients, storage temperature and the stability of the protein itself. Generally, the shelf life of liquid form is 6 months at -20°C/-80°C. The shelf life of lyophilized form is 12 months at -20°C/-80°C.