

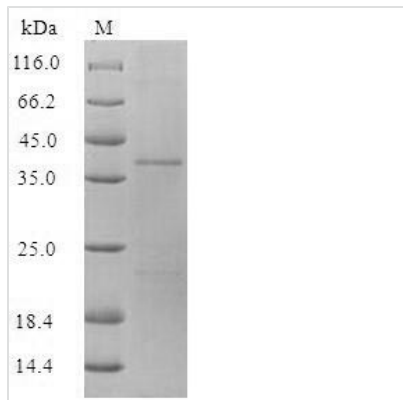


Recombinant Human BPI fold-containing family A member 1 (BPIFA1)

Product Code	CSB-CF868269HU
Relevance	Plays a role in the innate immune responses of the upper airways. Reduces the surface tension in secretions from airway epithelia and inhibits the formation of biofilm by pathogenic Gram-negative bacteria, such as <i>P.aeruginosa</i> and <i>K.pneumoniae</i> . Binds bacterial lipopolysaccharide (LPS). Negatively regulates proteolytic cleavage of SCNN1G, an event that is required for activation of the epithelial sodium channel (ENaC), and thereby contributes to airway surface liquid homeostasis and proper clearance of mucus. Plays a role in the airway inflammatory response after exposure to irritants. May attract macrophages and neutrophils. May be associated with tumor progression.
Abbreviation	Recombinant Human BPIFA1 protein
Storage	The shelf life is related to many factors, storage state, buffer ingredients, storage temperature and the stability of the protein itself. Generally, the shelf life of liquid form is 6 months at -20°C/-80°C. The shelf life of lyophilized form is 12 months at -20°C/-80°C.
Uniprot No.	Q9NP55
Product Type	Transmembrane Protein
Immunogen Species	Homo sapiens (Human)
Purity	Greater than 90% as determined by SDS-PAGE.
Sequence	QFGGLPVPLDQTLPLNVNPALPLSPTGLAGSLTNALSNGLLSGGLLGILENLPL LDILKPGGGTSGGLLGGLLGKVTVIPGLNNIIDIKVTDQPQLLELGLVQSPDGHR LYVTIPLGIKLQVNTPLVGASLLRLAVKLDITAEILAVRDKQERIHLVLGDCTHSP GSLQISLLDGLGPLPIQGLLDSLTLGILNKVLPPELVQGNVCPLVNEVLRGLDITLV HDIVNMLIHGLQFVIKV
Research Area	Cancer
Source	in vitro E.coli expression system
Target Names	BPIFA1
Protein Names	Lung-specific protein X Nasopharyngeal carcinoma-related protein Palate lung and nasal epithelium clone protein Secretory protein in upper respiratory tracts Short PLUNC1 Short name: SPLUNC1 Tracheal epithelium-enriched protein Von Ebner protein HI
Expression Region	20-256aa
Notes	Repeated freezing and thawing is not recommended. Store working aliquots at 4°C for up to one week.
Tag Info	N-terminal 6xHis-SUMO-tagged
Mol. Weight	40.7kDa


Protein Length

Full Length of Mature Protein

Image


(Tris-Glycine gel) Discontinuous SDS-PAGE (reduced) with 5% enrichment gel and 15% separation gel.

Reconstitution

We recommend that this vial be briefly centrifuged prior to opening to bring the contents to the bottom. Please reconstitute protein in deionized sterile water to a concentration of 0.1-1.0 mg/mL. We recommend to add 5-50% of glycerol (final concentration) and aliquot for long-term storage at -20°C/-80°C. Our default final concentration of glycerol is 50%. Customers could use it as reference.

Shelf Life

The shelf life is related to many factors, storage state, buffer ingredients, storage temperature and the stability of the protein itself. Generally, the shelf life of liquid form is 6 months at -20°C/-80°C. The shelf life of lyophilized form is 12 months at -20°C/-80°C.