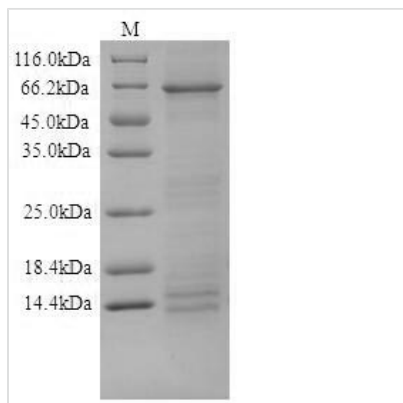


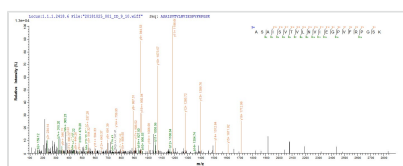


Recombinant Human Desmoglein-1 (DSG1), partial

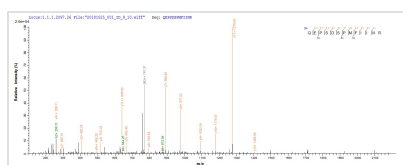
Product Code	CSB-CF861938HU
Relevance	Component of intercellular desmosome junctions. Involved in the interaction of plaque proteins and intermediate filaments mediating cell-cell adhesion.
Abbreviation	Recombinant Human DSG1 protein, partial
Storage	The shelf life is related to many factors, storage state, buffer ingredients, storage temperature and the stability of the protein itself. Generally, the shelf life of liquid form is 6 months at -20°C/-80°C. The shelf life of lyophilized form is 12 months at -20°C/-80°C.
Uniprot No.	Q02413
Storage Buffer	Lyophilized from Tris/PBS-based buffer, 6% Trehalose
Product Type	Transmembrane Protein
Immunogen Species	Homo sapiens(Human)
Purity	Greater than 90% as determined by SDS-PAGE.
Sequence	EWIKFAAACREGEDNSKRNP IAKIHSDCAANQQVTYRISGVGIDQPPYGIFVIN QKTGEINITSIVDREVT PFFIIYCRALNSMGQDLERPLELRVRVLDINDNPPVFS MATFAGQIEENSNANTLVMILNATDAEPNNLNSKIAFKIIRQEPSPSPMFIINRN TGEIRTMNNFLDREQYGGYALAVRGSDRDGGADGMSAECECNKILDVNDNIP YMEQSSYTIEIQENTLNSNLLEIRVIDLDEEFSANWMAVIFISGNEGNWFEIEM NERTNVGILKVVKPLDYEAMQSLQLSIGVRNKA EFHHSIMSQYKLKAS AISVTV LNVIEGPVFRPGSKTYVVTGNMG SNDKVGDFVATDLDTGRPSTTVRYVMGNN PADLLAVDSRTGKLT LKNKVTKEQYNMLGGKYQG TILSIDDNLQRTCTGTININI QSFGNDDRTNTEPNTKITNTGRQESTSSTNYDTSTTSTDSSQVYSSEPGNG AKDLLSDNVHFGP
Research Area	Signal Transduction
Source	in vitro E.coli expression system
Target Names	DSG1
Protein Names	Cadherin family member 4 Desmosomal glycoprotein 1
Expression Region	50-548aa
Notes	Repeated freezing and thawing is not recommended. Store working aliquots at 4°C for up to one week.
Tag Info	N-terminal 10xHis-tagged and C-terminal Myc-tagged
Mol. Weight	60.4kDa
Protein Length	Extracellular Domain
Image	



(Tris-Glycine gel) Discontinuous SDS-PAGE (reduced) with 5% enrichment gel and 15% separation gel.



Based on the SEQUEST from database of E.coli host and target protein, the LC-MS/MS Analysis result of CSB-CF861938HU could indicate that this peptide derived from E.coli-expressed Homo sapiens(Human) DSG1.



Based on the SEQUEST from database of E.coli host and target protein, the LC-MS/MS Analysis result of CSB-CF861938HU could indicate that this peptide derived from E.coli-expressed Homo sapiens(Human) DSG1.

Reconstitution

We recommend that this vial be briefly centrifuged prior to opening to bring the contents to the bottom. Please reconstitute protein in deionized sterile water to a concentration of 0.1-1.0 mg/mL. We recommend to add 5-50% of glycerol (final concentration) and aliquot for long-term storage at -20°C/-80°C. Our default final concentration of glycerol is 50%. Customers could use it as reference.

Shelf Life

The shelf life is related to many factors, storage state, buffer ingredients, storage temperature and the stability of the protein itself. Generally, the shelf life of liquid form is 6 months at -20°C/-80°C. The shelf life of lyophilized form is 12 months at -20°C/-80°C.