



Recombinant Human Metalloendopeptidase OMA1, mitochondrial (OMA1) (Active)

Product Code	CSB-CF856923HU
Relevance	Metalloprotease that is part of the quality control system in the inner membrane of mitochondria. Following stress conditions that induce loss of mitochondrial membrane potential, mediates cleavage of OPA1 at S1 position, leading to OPA1 inactivation and negative regulation of mitochondrial fusion. May also cleave UQCC3 under these conditions. Its role in mitochondrial quality control is essential for regulating lipid metabolism as well as to maintain body temperature and energy expenditure under cold-stress conditions.
Abbreviation	Recombinant Human OMA1 protein (Active)
Storage	The shelf life is related to many factors, storage state, buffer ingredients, storage temperature and the stability of the protein itself. Generally, the shelf life of liquid form is 6 months at -20°C/-80°C. The shelf life of lyophilized form is 12 months at -20°C/-80°C.
Uniprot No.	Q96E52
Form	Lyophilized powder
Storage Buffer	Lyophilized from 20 mM Tris-HCl, 0.15 M NaCl, 0.05% FOS12, 6% Trehalose, pH 8.0
Product Type	Other
Immunogen Species	Homo sapiens (Human)
Biological Activity	Measured by its binding ability in a functional ELISA. Immobilized OMA1 at 5 µg/ml can bind human BZW2, the EC50 of human BZM2 is 45.42-72.22 µg/ml.
Purity	Greater than 90% as determined by SDS-PAGE.
Sequence	HVFFRFNSLSNWRKCNTLASTSRGCHQVQVNHIVNKYQGLGVNQCDRWSFL PGNFHFYSTFNNKRTGGLSSTKSKEIWRITSKCTVWNDAFSRQLLIKEVTAVPS LSVLHPLSPASIRAIRNFHTSPRFQAAPVPLLLMILKPQKLFaiivGRGIRKWW QALPPNKKEVVKENIRKNKWKLFLGLSSFGLLFVVFYFTHLEVSPITGRSKLLLL GKEQFRLLSELEYEAWMEEFKNDMLTEKDARYLAVKEVLCHLIECNKDVP GISQINWVIHVVDSPiinaFVLPNGQMfVFTGFLNSVTDIHQLSfLLGHEIAH AVLGHAAEKAGMVHLLDfLGMiFLTMIWAICPRDSLALLCQWIQSKLQEYMFNRPYSR KLEAEADKIGLLLAACADIRASSVFWQQMEFVDSLHGQPKMPEWLSTHPS HGNRVEYLDRLIPQALKIREMCNCPPLSNPDPRLLFKLSTKHFLEESEKEDLNIT KKQKMDTLPIQKQEIQPLTYIVEKRTGS
Research Area	Cell Biology
Source	in vitro E.coli expression system
Target Names	OMA1
Expression Region	14-524aa



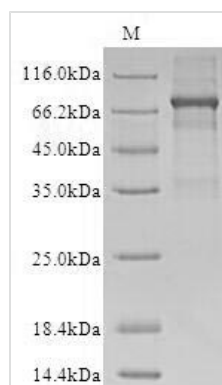
Notes Repeated freezing and thawing is not recommended. Store working aliquots at 4°C for up to one week.

Tag Info N-terminal 6xHis-SUMO-tagged

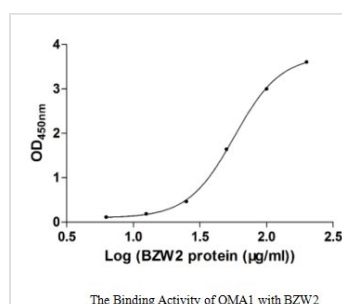
Mol. Weight 74.7kDa

Protein Length Full Length of Mature Protein

Image



(Tris-Glycine gel) Discontinuous SDS-PAGE (reduced) with 5% enrichment gel and 15% separation gel.



Activity

Measured by its binding ability in a functional ELISA. Immobilized OMA1 at 5 μg/ml can bind human BZW2, the EC₅₀ of human BZW2 is 45.42-72.22 μg/ml.

Reconstitution

We recommend that this vial be briefly centrifuged prior to opening to bring the contents to the bottom. Please reconstitute protein in deionized sterile water to a concentration of 0.1-1.0 mg/mL. We recommend to add 5-50% of glycerol (final concentration) and aliquot for long-term storage at -20°C/-80°C. Our default final concentration of glycerol is 50%. Customers could use it as reference.

Shelf Life

The shelf life is related to many factors, storage state, buffer ingredients, storage temperature and the stability of the protein itself. Generally, the shelf life of liquid form is 6 months at -20°C/-80°C. The shelf life of lyophilized form is 12 months at -20°C/-80°C.