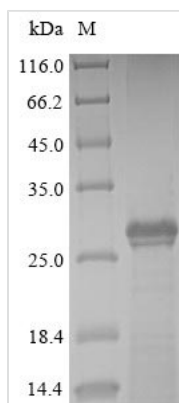




Recombinant Human BPI fold-containing family A member 2 (BPIFA2)

Product Code	CSB-CF839308HU
Relevance	Has strong antibacterial activity against <i>P. aeruginosa</i> .
Abbreviation	Recombinant Human BPIFA2 protein
Storage	The shelf life is related to many factors, storage state, buffer ingredients, storage temperature and the stability of the protein itself. Generally, the shelf life of liquid form is 6 months at -20°C/-80°C. The shelf life of lyophilized form is 12 months at -20°C/-80°C.
Uniprot No.	Q96DR5
Product Type	Transmembrane Protein
Immunogen Species	Homo sapiens (Human)
Purity	Greater than 90% as determined by SDS-PAGE.
Sequence	ESLLDNLGNDLSNVVDKLEPVLHEGLETVDNTLKGILEKLKVDLGVLQKSSAW QLAKQKAQEAELKLLNNVISKLLPTNTDIFGLKISNSLILDVKAEPIDDGKGLNLSF PVTANVTVAGPIIGQIINLKASDLLTAVTIETDPQTHQPVAVLGECDPTSL SLLDKHSQIINKFVNSVINTLKSTVSSLLQKEICPLIRIFIHSLDVNVIQQVVDNPQ HKTQLQTLI
Research Area	Developmental Biology
Source	in vitro E.coli expression system
Target Names	BPIFA2
Protein Names	Parotid secretory protein
Expression Region	19-249aa
Notes	Repeated freezing and thawing is not recommended. Store working aliquots at 4°C for up to one week.
Tag Info	Tag-Free
Mol. Weight	25.1kDa
Protein Length	Full Length of Mature Protein
Image	



(Tris-Glycine gel) Discontinuous SDS-PAGE (reduced) with 5% enrichment gel and 15% separation gel.

Reconstitution

We recommend that this vial be briefly centrifuged prior to opening to bring the contents to the bottom. Please reconstitute protein in deionized sterile water to a concentration of 0.1-1.0 mg/mL. We recommend to add 5-50% of glycerol (final concentration) and aliquot for long-term storage at -20°C/-80°C. Our default final concentration of glycerol is 50%. Customers could use it as reference.

Shelf Life

The shelf life is related to many factors, storage state, buffer ingredients, storage temperature and the stability of the protein itself. Generally, the shelf life of liquid form is 6 months at -20°C/-80°C. The shelf life of lyophilized form is 12 months at -20°C/-80°C.