

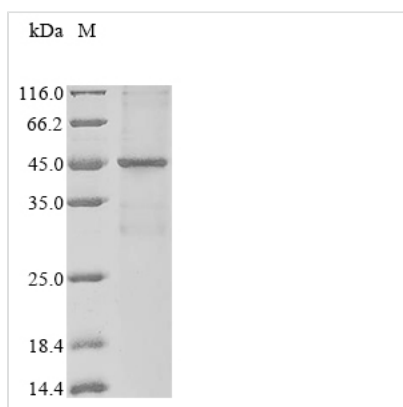


Recombinant Human Phosphatidylcholine:ceramide cholinephosphotransferase 1 (SGMS1)

Product Code	CSB-CF801243HU
Abbreviation	Recombinant Human SGMS1 protein
Storage	The shelf life is related to many factors, storage state, buffer ingredients, storage temperature and the stability of the protein itself. Generally, the shelf life of liquid form is 6 months at -20°C/-80°C. The shelf life of lyophilized form is 12 months at -20°C/-80°C.
Uniprot No.	Q86VZ5
Storage Buffer	Lyophilized from Tris/PBS-based buffer, 6% Trehalose
Product Type	Transmembrane Proteins
Immunogen Species	Homo sapiens (Human)
Sequence	MLSASTMKEVVYWSPKKVADWLLLENAMPEYCEPLEHFTGQDLINLTQEDFKK PPLCRVSS DNGQRLLDMIETLKMEHHLEAHKNGHANGHLNIGVDIPTPDGSFSIKIKPNGMP NGYRKE MIKIPMPELERSQYPMEWGKTFLAFLYALSCFVLTTVMISVVHERVPPKEVQPP LPDTFF DHFNRVQWAFSICEINGMILVGLWLIQWLLLKYKSIISRRFFCIVGTLYLYRCITM YVTT LPVPGMHFNCSPKLFGDWEAQLRRIMKLIAGGGLSITGSHNMCGDYLYSGHT VMLTLTYL FIKEYSPRRLWWYHWICWLLSVVGIFCILLAHDHYTVDVVVAYYITTRLFWWYH TMANQQ VLKEASQMNLLARVWWYRPFQYFEKNVQGIVPRSYHWPFPWPVVHLSRQVK YSRLVNDT
Source	in vitro E.coli expression system
Target Names	SGMS1
Protein Names	Recommended name: Phosphatidylcholine:ceramide cholinephosphotransferase 1 EC= 2.7.8.27 Alternative name(s): Medulla oblongata-derived protein Short name= Protein Mob Sphingomyelin synthase 1 Transmembrane protein 23
Expression Region	1-419
Notes	Repeated freezing and thawing is not recommended. Store working aliquots at 4°C for up to one week.
Tag Info	N-terminal 10xHis-tagged
Protein Length	full length protein



Image



(Tris-Glycine gel) Discontinuous SDS-PAGE (reduced) with 5% enrichment gel and 15% separation gel.

Shelf Life

The shelf life is related to many factors, storage state, buffer ingredients, storage temperature and the stability of the protein itself. Generally, the shelf life of liquid form is 6 months at -20°C/-80°C. The shelf life of lyophilized form is 12 months at -20°C/-80°C.