



Recombinant Escherichia coli Probable phosphatidylethanolamine transferase Mcr-1 (mcr1)

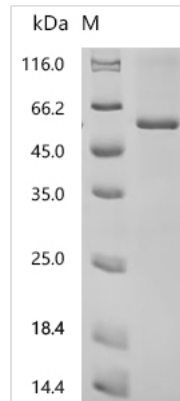
Product Code	CSB-CF745804ENLd7
Abbreviation	Recombinant E.coli mcr1 protein
Storage	The shelf life is related to many factors, storage state, buffer ingredients, storage temperature and the stability of the protein itself. Generally, the shelf life of liquid form is 6 months at -20?/-80?. The shelf life of lyophilized form is 12 months at -20?/-80?.
Uniprot No.	A0A0R6L508
Form	Liquid or Lyophilized powder
Storage Buffer	If the delivery form is liquid, the default storage buffer is Tris/PBS-based buffer, 5%-50% glycerol. If the delivery form is lyophilized powder, the buffer before lyophilization is Tris/PBS-based buffer, 6% Trehalose, pH 8.0.
Product Type	Recombinant Escherichia coli Probable phosphatidylethanolamine transferase Mcr-1 (mcr1)
Immunogen Species	Escherichia coli
Sensitivity	Not Test
Purity	Greater than 90% as determined by SDS-PAGE.
Sequence	MMQHTSVWYRRSVSPFVLVASVAVFLTATANLTFFDKISQTYPIADNLGFVLT AVVLFGAMLLITLLSSYRYVLKPVLLLLIMGAVTSYFTDTYGTVDTTMLQNAL QTDQAETKDLLNAAFIMRIIGLVLPSSLVAFVKVDYPTWGKGLMRRLGLIVASL ALILLPVVAFSSHYASFFRVHKPLRSYVNPIMPIYSVGKLASIEYKKASAPKDTIY HAKDAVQATKPDMRKPRLVVFVGETARADHVSFNGYERDTFPQLAKIDGVT NFSNVTSCGTSTAYSVPCMFSYLGADEYDVDTAKYQENVLDTLDRLGVSILWR DNNSDSKGVMDKLPKQFADYKSATNNAICNTNPYNECRDVGMLVGLDDFVA ANNGKMDLIMLHQMGNHGPAYFKRYDEKFAKFTPVCEGNELAKCEHQSLINA YDNALLATDDFIAQSIQWLQTHSNAYDVSMPLYVSDHGESLGENG VYLHGMPN AFAPKEQRSVPAFFWTDKQTGITPMATDTVLTHDAITPTLLKLFDTVADKVKDR TAFIR
Research Area	Microbiology
Source	in vitro E.coli expression system
Target Names	mcr1
Expression Region	1-541aa
Notes	Repeated freezing and thawing is not recommended. Store working aliquots at 4? for up to one week.
Tag Info	C-terminal 10xHis-tagged



Mol. Weight 63.1 kDa

Protein Length Full Length

Image



(Tris-Glycine gel) Discontinuous SDS-PAGE (reduced) with 5% enrichment gel and 15% separation gel.

Reconstitution

We recommend that this vial be briefly centrifuged prior to opening to bring the contents to the bottom. Please reconstitute protein in deionized sterile water to a concentration of 0.1-1.0 mg/mL. We recommend to add 5-50% of glycerol (final concentration) and aliquot for long-term storage at -20°C/-80°C. Our default final concentration of glycerol is 50%. Customers could use it as reference.

Shelf Life

The shelf life is related to many factors, storage state, buffer ingredients, storage temperature and the stability of the protein itself. Generally, the shelf life of liquid form is 6 months at -20°C/-80°C. The shelf life of lyophilized form is 12 months at -20°C/-80°C.