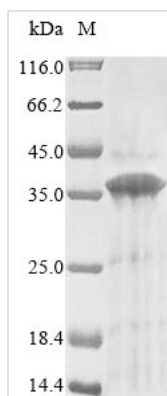




Recombinant Human G-protein coupled receptor 157 (GPR157)

Product Code	CSB-CF713185HU
Relevance	Orphan receptor that promotes neuronal differentiation of radial glial progenitors (RGPs). The activity of this receptor is mediated by a G(q)-protein that activates a phosphatidylinositol-calcium second messenger.
Abbreviation	Recombinant Human GPR157 protein
Storage	The shelf life is related to many factors, storage state, buffer ingredients, storage temperature and the stability of the protein itself. Generally, the shelf life of liquid form is 6 months at -20°C/-80°C. The shelf life of lyophilized form is 12 months at -20°C/-80°C.
Uniprot No.	Q5UAW9
Product Type	Transmembrane Protein
Immunogen Species	Homo sapiens (Human)
Purity	Greater than 85% as determined by SDS-PAGE.
Sequence	MQPSPPPTELVPSERAVLLSCALSALGSGLLVATHALWPDLRSRARRLLLFL SLADLLSAASYFYGVLFQNFAGPSWDCVLQGALSTFANTSSFFWTVAIALYLYLS IVRAARGPRTRDLLWAFHVSVWGVPLVITVAVALKKIGYDASDVSVGWCWID LEAKDHVLWMLLTGKLWEMLAYVLLPLLYLLVRKHINRAHTALSEYRPILSQEH RLLRHSSMADKKLVLIPLIFIGLRVWSTVRFVLTLCGSPAVQTPVLVVLHGIGNT FQGGANCIMFVLCTRAVRTRLFSLCCCCSSQPPTKSPAGTPKAPAPSKPGE SQESQGTGPGELPST
Research Area	Signal Transduction
Source	in vitro E.coli expression system
Target Names	GPR157
Protein Names	Recommended name: Probable G-protein coupled receptor 157
Expression Region	1-335aa
Notes	Repeated freezing and thawing is not recommended. Store working aliquots at 4°C for up to one week.
Tag Info	N-terminal 10xHis-tagged
Mol. Weight	39.4 kDa
Protein Length	Full Length
Image	



(Tris-Glycine gel) Discontinuous SDS-PAGE (reduced) with 5% enrichment gel and 15% separation gel.

Reconstitution

We recommend that this vial be briefly centrifuged prior to opening to bring the contents to the bottom. Please reconstitute protein in deionized sterile water to a concentration of 0.1-1.0 mg/mL. We recommend to add 5-50% of glycerol (final concentration) and aliquot for long-term storage at -20°C/-80°C. Our default final concentration of glycerol is 50%. Customers could use it as reference.

Shelf Life

The shelf life is related to many factors, storage state, buffer ingredients, storage temperature and the stability of the protein itself. Generally, the shelf life of liquid form is 6 months at -20°C/-80°C. The shelf life of lyophilized form is 12 months at -20°C/-80°C.