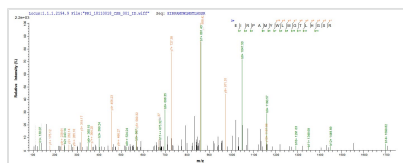




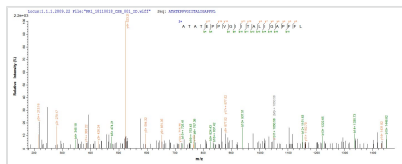
Recombinant Halobacterium salinarum Cobalamin import system permease protein BtuC (btuC)

Product Code	CSB-CF532244HTL(A4)
Abbreviation	Recombinant Halobacterium salinarum btuC protein
Storage	The shelf life is related to many factors, storage state, buffer ingredients, storage temperature and the stability of the protein itself. Generally, the shelf life of liquid form is 6 months at -20°C/-80°C. The shelf life of lyophilized form is 12 months at -20°C/-80°C.
Uniprot No.	B0R5G3
Storage Buffer	Lyophilized from Tris/PBS-based buffer, 6% Trehalose
Product Type	Transmembrane Protein
Immunogen Species	Halobacterium salinarum (strain ATCC 29341 / DSM 671 / R1)
Purity	Greater than 85% as determined by SDS-PAGE.
Sequence	MREASARAVAWSAAAGVLLVAVLLVSATIGPEPITLRTVAMAALTELAVPVGAS VTMHTHAVPVVSGGLPWPALTIAYAAPLQFGVPETAQVIVGTIRLPRIVLGATV GASLAISGAVLQGFFRNPMADPSIVGVSSGAAGAVAAITLPSVVVIGVQPAAF AGALIAFTVYAIATKNGHTPTATLLLSGVAVQTLLGAVTSFLVVNSGREIRPAM YWLMGTLHGSRWHDVEAALPVVVVGSVLLAYAREMNVLLAGEEDAHTLGV DVDRTKRLLLAASVVTAAAVSFAGAIGFVGLIVPHAVRLVVGPDHRVLLPVSA LTGGAFLVAADTVARATATEPPVGIITALIGAPFFLYLLRDREVRAL
Research Area	Others
Source	in vitro E.coli expression system
Target Names	btuC
Expression Region	1-369aa
Notes	Repeated freezing and thawing is not recommended. Store working aliquots at 4°C for up to one week.
Tag Info	N-terminal 10xHis-tagged
Mol. Weight	40.3 kDa
Protein Length	Full Length

Image



Based on the SEQUEST from database of E.coli host and target protein, the LC-MS/MS Analysis result of CSB-CF532244HTL(A4) could indicate that this peptide derived from E.coli-expressed Halobacterium salinarum (strain ATCC 29341 / DSM 671 / R1) btuC.



Based on the SEQUEST from database of E.coli host and target protein, the LC-MS/MS Analysis result of CSB-CF532244HTL(A4) could indicate that this peptide derived from E.coli-expressed Halobacterium salinarum (strain ATCC 29341 / DSM 671 / R1) btuC.

Reconstitution

We recommend that this vial be briefly centrifuged prior to opening to bring the contents to the bottom. Please reconstitute protein in deionized sterile water to a concentration of 0.1-1.0 mg/mL. We recommend to add 5-50% of glycerol (final concentration) and aliquot for long-term storage at -20°C/-80°C. Our default final concentration of glycerol is 50%. Customers could use it as reference.

Shelf Life

The shelf life is related to many factors, storage state, buffer ingredients, storage temperature and the stability of the protein itself. Generally, the shelf life of liquid form is 6 months at -20°C/-80°C. The shelf life of lyophilized form is 12 months at -20°C/-80°C.