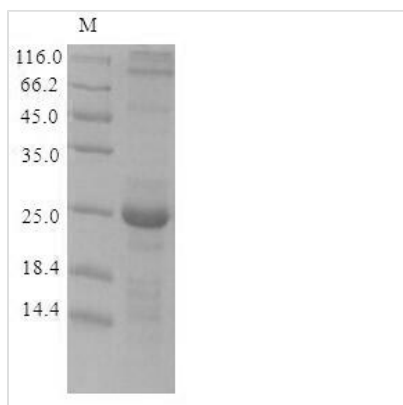




Recombinant Lymphocytic choriomeningitis virus Pre-glycoprotein polyprotein GP complex (GPC), partial

Product Code	CSB-CF357830LKW(A4)
Relevance	Stable signal peptide (SSP) is cleaved but is apparently retained as the third component of the GP complex. The SSP is required for efficient glycoprotein expression, post-translational cleavage of GP1 and GP2, glycoprotein transport to the cell plasma membrane, formation of infectious virus particles, and acid pH-dependent glycoprotein-mediated cell fusion. ¹ PublicationGlycoprotein G1 mediates virus attachment to host receptor alpha-dystroglycan DAG1. This attachment induces virion internalization predominantly through clathrin- and caveolin-independent endocytosis. ¹ PublicationGlycoprotein G2 is a class I viral fusion protein, that directs fusion of viral and host endosomal membranes, leading to delivery of the nucleocapsid into the cytoplasm. Membrane fusion is mediated by irreversible conformational changes induced upon acidification in the endosome.
Abbreviation	Recombinant Lymphocytic choriomeningitis virus GPC protein, partial
Storage	The shelf life is related to many factors, storage state, buffer ingredients, storage temperature and the stability of the protein itself. Generally, the shelf life of liquid form is 6 months at -20°C/-80°C. The shelf life of lyophilized form is 12 months at -20°C/-80°C.
Uniprot No.	P09991
Product Type	Transmembrane Protein
Immunogen Species	Lymphocytic choriomeningitis virus (strain Armstrong) (LCMV)
Purity	Greater than 90% as determined by SDS-PAGE.
Sequence	ALPHIIDEVINIVIIVLIVITGIKAVYNFATCGIFALISFLLLAGRSCGMYGLKGPDIYK GVYQFKSVEFDMSHLNLTPN
Source	in vitro E.coli expression system
Target Names	GPC
Expression Region	10-90aa
Notes	Repeated freezing and thawing is not recommended. Store working aliquots at 4°C for up to one week.
Tag Info	N-terminal 6xHis-SUMO-tagged
Mol. Weight	24.9kDa
Protein Length	Partial
Image	



(Tris-Glycine gel) Discontinuous SDS-PAGE (reduced) with 5% enrichment gel and 15% separation gel.

Reconstitution

We recommend that this vial be briefly centrifuged prior to opening to bring the contents to the bottom. Please reconstitute protein in deionized sterile water to a concentration of 0.1-1.0 mg/mL. We recommend to add 5-50% of glycerol (final concentration) and aliquot for long-term storage at -20°C/-80°C. Our default final concentration of glycerol is 50%. Customers could use it as reference.

Shelf Life

The shelf life is related to many factors, storage state, buffer ingredients, storage temperature and the stability of the protein itself. Generally, the shelf life of liquid form is 6 months at -20°C/-80°C. The shelf life of lyophilized form is 12 months at -20°C/-80°C.