



Recombinant Borna disease virus Envelope glycoprotein p57 (G), partial

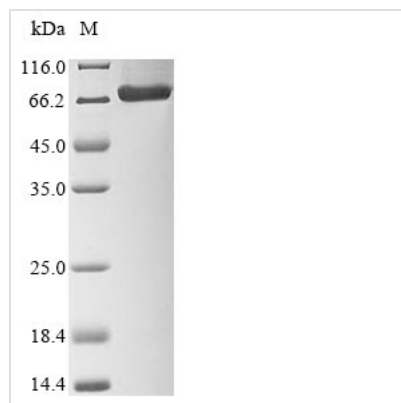
Product Code	CSB-CF345219BIN
Relevance	Unprocessed envelope protein p57 is thought to be involved in attachment of the virus to its cell surface receptor. This attachment induces virion internalization predominantly through clathrin-dependent endocytosis. Envelope protein p27 and p29 presumably linked by disulfide bond are the viral type II fusion protein, involved in pH-dependent fusion within early endosomes after internalization of the virion by endocytosis.
Abbreviation	Recombinant Borna disease virus Envelope glycoprotein p57, partial
Storage	The shelf life is related to many factors, storage state, buffer ingredients, storage temperature and the stability of the protein itself. Generally, the shelf life of liquid form is 6 months at -20°C/-80°C. The shelf life of lyophilized form is 12 months at -20°C/-80°C.
Uniprot No.	P52638
Storage Buffer	Lyophilized from Tris/PBS-based buffer, 6% Trehalose
Product Type	Transmembrane Proteins
Immunogen Species	Borna disease virus (strain V) (BDV)
Purity	Greater than 85% as determined by SDS-PAGE.
Sequence	FDLQGLSCNTDSTPGLIDLEIRRLCHTPTENVISCEVSYLNHTTISLPAVHTSCL KYHCKTYWGFFGSYSADRIINRYTGTGTVKGCLNNSAPEDPFECNWFYCCSAITT EICRCSITNVTVAVQTFPPFMYCSFADCSTVSQQELESGBKAMLSDGSTLTYP YILQSEVVNKTNLNGTILCNSSSKIVSFDEFRRSYSLTNGSYQSSSINVTCANYTS SCRPLKRRRRDRTQQIEYLVHKLRLTKDAWEDCEILQSLLLGVFGTGIASASQ FLRSWLNHPDIIGYIVNGVGVVWQCHRVNVTFAWNESTYPPVDYNGRKYF LNDEGRLQTNTPPEARPGLKRVMWFGRYFLGTGSGVKPRRIRYNKTSHDYHL EEFEASLNMTPQTSIASGHETDPINHAYGTQADLLPYTRSSNITSTDTGSGWV HIGLPSFAFLNPLGWLRD
Research Area	Others
Source	in vitro E.coli expression system
Target Names	G
Protein Names	gp84gp94
Expression Region	23-467aa
Notes	Repeated freezing and thawing is not recommended. Store working aliquots at 4°C for up to one week.
Tag Info	N-terminal 6xHis-SUMO-tagged
Mol. Weight	66.2 kDa



Protein Length

Extracellular Domain

Image



(Tris-Glycine gel) Discontinuous SDS-PAGE (reduced) with 5% enrichment gel and 15% separation gel.

Shelf Life

The shelf life is related to many factors, storage state, buffer ingredients, storage temperature and the stability of the protein itself. Generally, the shelf life of liquid form is 6 months at -20°C/-80°C. The shelf life of lyophilized form is 12 months at -20°C/-80°C.