



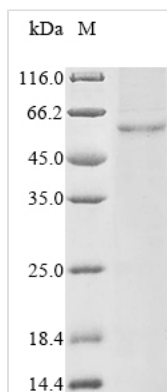
Recombinant Escherichia coli

Phosphoethanolamine transferase EptA (eptA)

Product Code	CSB-CF335584ENV
Abbreviation	Recombinant E.coli eptA protein
Storage	The shelf life is related to many factors, storage state, buffer ingredients, storage temperature and the stability of the protein itself. Generally, the shelf life of liquid form is 6 months at -20°C/-80°C. The shelf life of lyophilized form is 12 months at -20°C/-80°C.
Uniprot No.	P30845
Storage Buffer	Lyophilized from Tris/PBS-based buffer, 6% Trehalose
Product Type	Transmembrane Proteins
Immunogen Species	Escherichia coli (strain K12)
Sequence	MLKRLKRPSTNLLAWLLLAIFYISICLNIAFFKQVLQALPLDSLHNVLVFLSMPV VAFS VINIVLTSSFLWLNRPACLFILVGAAAQYFIMTYGIVIDRSMIANIIDTTAESYA LM TPQMLLTGFGSVLAALACWIKIKPATSRRLSVLFRGANILVSVLLILLVAALFYK DYA SLFRNNKELVKSLSPSNSIVASWSWYSHQRLANLPLVRIGEDAHNRNPLMQNEK RKNLTIL IVGETSRAENFSLNGYPRETNPRLAKDNVVYFPNTASCGTATAVSVPCMFSD MPREHYKE ELAQHQEGVLDIIQRAGINVLWNDNDGGCKGACDRVPHQNVTALNLPDQCIN GECYDEVL FHGLEEYINNLLQGDGVIVLHTIGSHGPTYYNRYPPQFRKFTPTCDTNEIQTCTK EQLVNT YDNTLVYVDYIVDKAINLLKEHQDKFTTSLVYLSDHGESLGENGIYHGLPYAIA PDSQK QVPMLLWLSEDYQKRYQVDQNCCLQKQAQTQHYSQDNLFSTLLGLTGIVETKY YQAADDILQ TCRRVSE
Source	in vitro E.coli expression system
Target Names	eptA
Protein Names	Recommended name: Phosphoethanolamine transferase eptA EC= 2.7.-.- Alternative name(s): Polymyxin resistance protein pmrC
Expression Region	1-547
Notes	Repeated freezing and thawing is not recommended. Store working aliquots at 4°C for up to one week.
Tag Info	N-terminal 10xHis-tagged
Protein Length	full length protein



Image



(Tris-Glycine gel) Discontinuous SDS-PAGE (reduced) with 5% enrichment gel and 15% separation gel.

Shelf Life

The shelf life is related to many factors, storage state, buffer ingredients, storage temperature and the stability of the protein itself.

Generally, the shelf life of liquid form is 6 months at -20°C/-80°C. The shelf life of lyophilized form is 12 months at -20°C/-80°C.