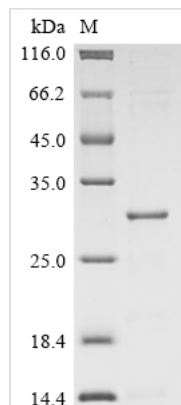




Recombinant Escherichia coli Colicin-E5 (col), partial

Product Code	CSB-CF323819ENL1
Abbreviation	Recombinant E.coli col protein, partial
Storage	The shelf life is related to many factors, storage state, buffer ingredients, storage temperature and the stability of the protein itself. Generally, the shelf life of liquid form is 6 months at -20°C/-80°C. The shelf life of lyophilized form is 12 months at -20°C/-80°C.
Uniprot No.	P18000
Form	Liquid or Lyophilized powder
Storage Buffer	If the delivery form is liquid, the default storage buffer is Tris/PBS-based buffer, 5%-50% glycerol. If the delivery form is lyophilized powder, the buffer before lyophilization is Tris/PBS-based buffer, 6% Trehalose.
Product Type	Transmembrane Proteins
Immunogen Species	Escherichia coli
Purity	Greater than 85% as determined by SDS-PAGE.
Sequence	LAKNKGKIPGLKIDQKIRGQMPERGWTEDDIKNTVSNGATGTSFDKRSPKKTP PDYLGRRNDPATVYGSPGKYVVVNDRTGEVTQISDKTDPGWVDDSRIQWGNK NDQ
Research Area	Signal Transduction
Source	in vitro E.coli expression system
Target Names	col
Expression Region	74-180aa
Notes	Repeated freezing and thawing is not recommended. Store working aliquots at 4°C for up to one week.
Tag Info	N-terminal 6xHis-SUMO-tagged
Mol. Weight	24.8 kDa
Protein Length	Partial
Image	



(Tris-Glycine gel) Discontinuous SDS-PAGE (reduced) with 5% enrichment gel and 15% separation gel.

Description

The production of the recombinant Escherichia coli col protein in an in vitro E.coli expression system involves the construction of an expression vector carrying the gene sequence of Escherichia coli col (74-180aa) with the N-terminal 6xHis-SUMO tag, linearization of the constructed vector, induction of the in vitro transcription and in vitro translation of the col gene under appropriate reaction conditions, monitoring protein synthesis and harvesting the reaction, purification of the harvested reaction mixture to obtain the protein, and analyzing the purified protein. The purity of the resulting recombinant Escherichia coli col protein exceeds 85% as determined by SDS-PAGE.

Reconstitution

We recommend that this vial be briefly centrifuged prior to opening to bring the contents to the bottom. Please reconstitute protein in deionized sterile water to a concentration of 0.1-1.0 mg/mL. We recommend to add 5-50% of glycerol (final concentration) and aliquot for long-term storage at -20°C/-80°C. Our default final concentration of glycerol is 50%. Customers could use it as reference.

Shelf Life

The shelf life is related to many factors, storage state, buffer ingredients, storage temperature and the stability of the protein itself. Generally, the shelf life of liquid form is 6 months at -20°C/-80°C. The shelf life of lyophilized form is 12 months at -20°C/-80°C.