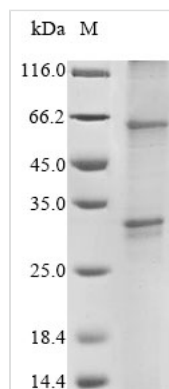




# Recombinant Human G protein-coupled receptor 20 variant

<b>Product Code</b>	CSB-CF3008HU
<b>Abbreviation</b>	Recombinant Human G protein-coupled receptor 20 variant protein
<b>Storage</b>	The shelf life is related to many factors, storage state, buffer ingredients, storage temperature and the stability of the protein itself. Generally, the shelf life of liquid form is 6 months at -20°C/-80°C. The shelf life of lyophilized form is 12 months at -20°C/-80°C.
<b>Uniprot No.</b>	Q59GP3
<b>Storage Buffer</b>	Lyophilized from Tris/PBS-based buffer, 6% Trehalose
<b>Product Type</b>	Transmembrane Proteins
<b>Immunogen Species</b>	Homo sapiens (Human)
<b>Purity</b>	Greater than 85% as determined by SDS-PAGE.
<b>Sequence</b>	TPSVIYTINLVVTDLLVGLSLPTRFAVYYGARGCLRCAPPHVLGYFLNMHCSILF LTCICVDRLAIVRPEGSRRRCRQPACARAVCAFWLAAGAVTSLVLTGSRP CCRVFALTVEFLLPLLVISVFTGRIMCALSRLPGLLHQGRQRRVRAMQLLLTVLI IFLVCFTPFHARQVAVALWPDMPHHTSLVVYHVAVTLSSLNSCMDPIVYCFVTS GFQATVRGLFGQHGEREPSSGDVSMHRSSKSGRRHHLSAGPHALTQALA NGPEA
<b>Research Area</b>	Others
<b>Source</b>	in vitro E.coli expression system
<b>Expression Region</b>	1-273aa
<b>Notes</b>	Repeated freezing and thawing is not recommended. Store working aliquots at 4°C for up to one week.
<b>Tag Info</b>	N-terminal 10xHis-tagged
<b>Mol. Weight</b>	35.8 kDa
<b>Protein Length</b>	Full Length

## Image



(Tris-Glycine gel) Discontinuous SDS-PAGE (reduced) with 5% enrichment gel and 15% separation gel.



## **Shelf Life**

The shelf life is related to many factors, storage state, buffer ingredients, storage temperature and the stability of the protein itself.

Generally, the shelf life of liquid form is 6 months at -20°C/-80°C. The shelf life of lyophilized form is 12 months at -20°C/-80°C.