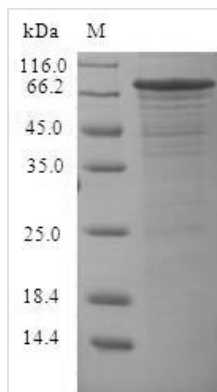




Recombinant Rice Helix-loop-helix DNA-binding domain containing protein, expressed (LOC_Os11g32100)

Product Code	CSB-CF2220OGF
Abbreviation	Recombinant Oryza sativa subsp. japonica LOC_Os11g32100 protein
Storage	The shelf life is related to many factors, storage state, buffer ingredients, storage temperature and the stability of the protein itself. Generally, the shelf life of liquid form is 6 months at -20°C/-80°C. The shelf life of lyophilized form is 12 months at -20°C/-80°C.
Uniprot No.	Q2R3F6
Product Type	Transmembrane Protein
Purity	Greater than 90% as determined by SDS-PAGE.
Sequence	MLPRFHGAMWMQDDGGGDQEHGQAAPPGQEQHHHDQHLMALAAAAAGGA GFGAAQAPAPLLDEDWYFDAAGGGGGGAHGSMMLGLSSVHGGIGAGTSGG GHGQQFSLLNMGAAAAPFDVSGFDLGIACGGVGGGGDVVSFLGGGNASNTA LLPVGNAGFLGTGGFGTAASQMPEFGGLAGFDMFDAGAVNTGGSSSSSSA AAAAASASAHVSNTAPFSGRGKAAVLRPLDIVPPVGAQPTLFQKRALRRNAGE DDDDKKRKAAGAGAGALSADGADMVLDDGDDGLSIDASGGLNYDSEDAR GGEDSGAKKESNANSTVTGDGKGKKKGMPAKNLMAERRRRKKLNDRLYMLR SVVPKISKMDRASILGDAIEYLKELLQKINDLQNELESSPATSSLPPTPTSFHPLT PTLPTLPSRIKEEICPSALPSPTGQQPRVEVRLREGRAVNIHMFCARRPGLLLS AMRAVEGLGLDVQQAVISCFNGFTLDIFKAEQCKDGPGLLPEEIKAVLMQSAG FHTMI
Research Area	others
Source	in vitro E.coli expression system
Target Names	LOC_Os11g32100
Expression Region	1-524aa
Notes	Repeated freezing and thawing is not recommended. Store working aliquots at 4°C for up to one week.
Tag Info	N-terminal 6xHis-SUMO-tagged
Mol. Weight	69.5kDa
Protein Length	Full Length
Image	



(Tris-Glycine gel) Discontinuous SDS-PAGE (reduced) with 5% enrichment gel and 15% separation gel.

Reconstitution

We recommend that this vial be briefly centrifuged prior to opening to bring the contents to the bottom. Please reconstitute protein in deionized sterile water to a concentration of 0.1-1.0 mg/mL. We recommend to add 5-50% of glycerol (final concentration) and aliquot for long-term storage at -20°C/-80°C. Our default final concentration of glycerol is 50%. Customers could use it as reference.

Shelf Life

The shelf life is related to many factors, storage state, buffer ingredients, storage temperature and the stability of the protein itself. Generally, the shelf life of liquid form is 6 months at -20°C/-80°C. The shelf life of lyophilized form is 12 months at -20°C/-80°C.