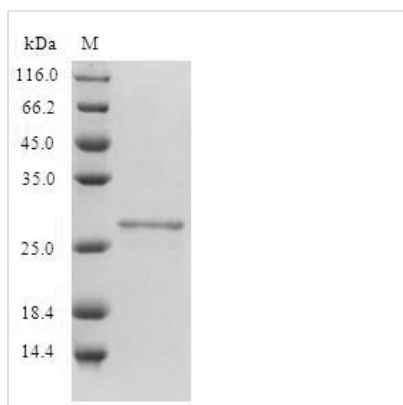




# Recombinant Human T-lymphocyte activation antigen CD80 (CD80)

<b>Product Code</b>	CSB-CF1054HU
<b>Relevance</b>	Involved in the costimulatory signal essential for T-lymphocyte activation. T-cell proliferation and cytokine production is induced by the binding of CD28, binding to CTLA-4 has opposite effects and inhibits T-cell activation. (Microbial infection) Acts as a receptor for adenovirus subgroup B.
<b>Abbreviation</b>	Recombinant Human CD80 protein
<b>Storage</b>	The shelf life is related to many factors, storage state, buffer ingredients, storage temperature and the stability of the protein itself. Generally, the shelf life of liquid form is 6 months at -20°C/-80°C. The shelf life of lyophilized form is 12 months at -20°C/-80°C.
<b>Uniprot No.</b>	P33681
<b>Product Type</b>	Transmembrane Protein
<b>Immunogen Species</b>	Homo sapiens (Human)
<b>Purity</b>	Greater than 85% as determined by SDS-PAGE.
<b>Sequence</b>	VIHVTKEVKEVATLSCGHNVSVEELAQTRIYWQKEKKMVLTMMSGDMNIWPE YKNRTIFDITNNLSIVILALRPSDEGTYECVVLKYEKDAFKREHLAEVTL SVKADF PTPSISDFEIPTSNIRRIICSTSGGFPEPHLSWLENGEELNAINTTVSQDPETELY AVSSKLDNFNMTTNHSFMCLIKYGHRLRVNQTFNWNTTKQEHFPDNLPSWAITLI SVNGIFVICCLTYCFAPRCRERRRRNERLRRESVRPV
<b>Research Area</b>	Immunology
<b>Source</b>	in vitro E.coli expression system
<b>Target Names</b>	CD80
<b>Protein Names</b>	Activation B7-1 antigen BB1 CTLA-4 counter-receptor B7.1
<b>Expression Region</b>	35-288aa
<b>Notes</b>	Repeated freezing and thawing is not recommended. Store working aliquots at 4°C for up to one week.
<b>Tag Info</b>	N-terminal 10xHis-tagged
<b>Mol. Weight</b>	32.8 kDa
<b>Protein Length</b>	Full Length of Mature Protein
<b>Image</b>	



(Tris-Glycine gel) Discontinuous SDS-PAGE (reduced) with 5% enrichment gel and 15% separation gel.

### Reconstitution

We recommend that this vial be briefly centrifuged prior to opening to bring the contents to the bottom. Please reconstitute protein in deionized sterile water to a concentration of 0.1-1.0 mg/mL. We recommend to add 5-50% of glycerol (final concentration) and aliquot for long-term storage at -20°C/-80°C. Our default final concentration of glycerol is 50%. Customers could use it as reference.

### Shelf Life

The shelf life is related to many factors, storage state, buffer ingredients, storage temperature and the stability of the protein itself. Generally, the shelf life of liquid form is 6 months at -20°C/-80°C. The shelf life of lyophilized form is 12 months at -20°C/-80°C.