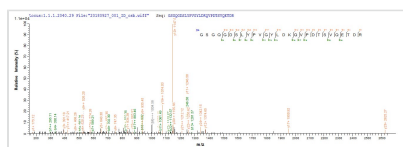




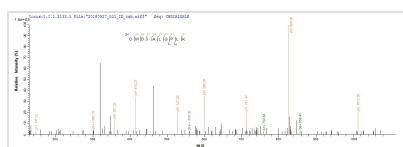
Recombinant Human ER membrane protein complex subunit 4 (EMC4)

Product Code	CSB-CF023887HU
Abbreviation	Recombinant Human EMC4 protein
Storage	The shelf life is related to many factors, storage state, buffer ingredients, storage temperature and the stability of the protein itself. Generally, the shelf life of liquid form is 6 months at -20°C/-80°C. The shelf life of lyophilized form is 12 months at -20°C/-80°C.
Uniprot No.	Q5J8M3
Product Type	Transmembrane Protein
Immunogen Species	Homo sapiens (Human)
Purity	Greater than 85% as determined by SDS-PAGE.
Sequence	TAQGGLVANRGRFRKWAIELSGPGGSRGRSDRGSGQGDSLYPVGYLDKQV PDTSVQETDRILVEKRCWDIALGPLKQIPMNLFIMYMAGNTISIFPTMMVCMMA WRPIQALMAISATFKMLESSSQKFLQGLVYLIGNLMGLALAVYKCQSMGLLP TH ASDWLAFIEPPERMEFSGGGLL
Research Area	Others
Source	in vitro E.coli expression system
Target Names	EMC4
Protein Names	Recommended name: Transmembrane protein 85Alternative name(s): Cell proliferation-inducing gene 17 protein
Expression Region	2-183aa
Notes	Repeated freezing and thawing is not recommended. Store working aliquots at 4°C for up to one week.
Tag Info	N-terminal 10xHis-tagged
Mol. Weight	26.0 kDa
Protein Length	Full Length of Mature Protein

Image



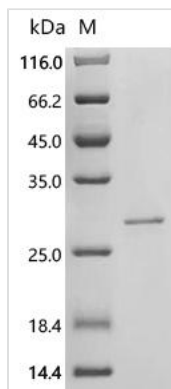
Based on the SEQUEST from database of E.coli host and target protein, the LC-MS/MS Analysis result of CSB-CF023887HU could indicate that this peptide derived from E.coli-expressed Recombinant Human ER membrane protein complex subunit 4(EMC4) EMC4.



Based on the SEQUEST from database of E.coli host and target protein, the LC-MS/MS Analysis result of CSB-CF023887HU could indicate that this peptide derived from E.coli-expressed Recombinant Human ER membrane protein



complex subunit 4(EMC4) EMC4.



(Tris-Glycine gel) Discontinuous SDS-PAGE (reduced) with 5% enrichment gel and 15% separation gel.

Reconstitution

We recommend that this vial be briefly centrifuged prior to opening to bring the contents to the bottom. Please reconstitute protein in deionized sterile water to a concentration of 0.1-1.0 mg/mL. We recommend to add 5-50% of glycerol (final concentration) and aliquot for long-term storage at -20°C/-80°C. Our default final concentration of glycerol is 50%. Customers could use it as reference.

Shelf Life

The shelf life is related to many factors, storage state, buffer ingredients, storage temperature and the stability of the protein itself. Generally, the shelf life of liquid form is 6 months at -20°C/-80°C. The shelf life of lyophilized form is 12 months at -20°C/-80°C.