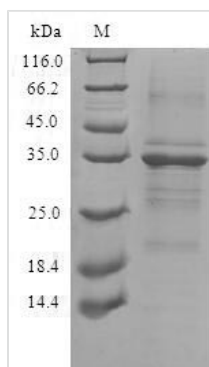




Recombinant Human Transmembrane protein 59 (TMEM59)

Product Code	CSB-CF023860HU
Relevance	Acts as a regulator of autophagy in response to S.aureus infection by promoting activation of LC3 (MAP1LC3A, MAP1LC3B or MAP1LC3C). Acts by interacting with ATG16L1, leading to promote a functional complex between LC3 and ATG16L1 and promoting LC3 lipidation and subsequent activation of autophagy. Modulates the O-glycosylation and complex N-glycosylation steps occurring during the Golgi maturation of several proteins such as APP, BACE1, SEAP or PRNP. Inhibits APP transport to the cell surface and further shedding
Abbreviation	Recombinant Human TMEM59 protein
Storage	The shelf life is related to many factors, storage state, buffer ingredients, storage temperature and the stability of the protein itself. Generally, the shelf life of liquid form is 6 months at -20°C/-80°C. The shelf life of lyophilized form is 12 months at -20°C/-80°C.
Uniprot No.	Q9BXS4
Product Type	Transmembrane Protein
Immunogen Species	Homo sapiens (Human)
Purity	Greater than 90% as determined by SDS-PAGE.
Sequence	AFDSVLGDTASCHRAQLTYPLHTYPKEEELYACQRGCRFLFSICQFVDDGIDL NRTKLECESACTEAYSQSDEQYACHLGCQNQLPFAELRQEQLMSLMPKMHLL FPLTLVRSFWSDMMDSAQSFITSSWTFYQLQADDGKIVIFQSKPEIQYAPHLEQE PTNLRESSLSKMSYLMRNSQAHNRFLEDGESDGLRCLSLNSGWILTTTLVL SVMVLLWICCATVATAVEQYVPSEKLSIYGDLEFMNEQKLNRYPASSLVVRS KTEDHEEAGPLPTKVNLAHSEI
Research Area	Neuroscience
Source	in vitro E.coli expression system
Target Names	TMEM59
Protein Names	Liver membrane-bound protein
Expression Region	37-323aa
Notes	Repeated freezing and thawing is not recommended. Store working aliquots at 4°C for up to one week.
Tag Info	C-terminal 10xHis-tagged
Mol. Weight	35.5kDa
Protein Length	Full Length of Mature Protein
Image	



(Tris-Glycine gel) Discontinuous SDS-PAGE (reduced) with 5% enrichment gel and 15% separation gel.

Reconstitution

We recommend that this vial be briefly centrifuged prior to opening to bring the contents to the bottom. Please reconstitute protein in deionized sterile water to a concentration of 0.1-1.0 mg/mL. We recommend to add 5-50% of glycerol (final concentration) and aliquot for long-term storage at -20°C/-80°C. Our default final concentration of glycerol is 50%. Customers could use it as reference.

Shelf Life

The shelf life is related to many factors, storage state, buffer ingredients, storage temperature and the stability of the protein itself. Generally, the shelf life of liquid form is 6 months at -20°C/-80°C. The shelf life of lyophilized form is 12 months at -20°C/-80°C.