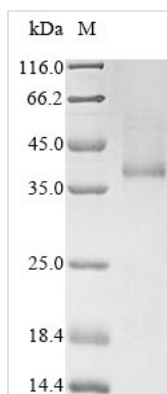




# Recombinant Human Blood group Rh (D) polypeptide (RHD)

<b>Product Code</b>	CSB-CF019677HU(A4)
<b>Relevance</b>	May be part of an oligomeric complex which is likely to have a transport or channel function in the erythrocyte membrane.
<b>Abbreviation</b>	Recombinant Human RHD protein
<b>Storage</b>	The shelf life is related to many factors, storage state, buffer ingredients, storage temperature and the stability of the protein itself. Generally, the shelf life of liquid form is 6 months at -20°C/-80°C. The shelf life of lyophilized form is 12 months at -20°C/-80°C.
<b>Uniprot No.</b>	Q02161
<b>Product Type</b>	Transmembrane Protein
<b>Immunogen Species</b>	Homo sapiens (Human)
<b>Purity</b>	Greater than 85% as determined by SDS-PAGE.
<b>Sequence</b>	SSKYPRSVRRCLPLWALTLEAAILLFYFFTHYDASLEDQKGLVASVYQVGQDLT VMAAIGLGLTSSFRHSSVAFNLFMLALGVQWAILLDGFLSQFSPSGKVVIT LFSIRLATMSALSVLISVDAVLGKVNLAQLVVMVLVEVTALGNLRMVISNIFNTD YHMNMMHIYVFAAYFGLSVAWCLPKPLPEGTEDKDQTATIPSLSAMLGALFLW MFWPSFNSALLRSPIERKNAVFNTYYAVAVSVVTAISGSSLAHPQGKISKTYVH SAVLAGGVAVGTSCHLIPSPWLAMVLGLVAGLISVGGAKYLPGCCNRVLGIPH SSIMGYNFSLGLLGEIYIVLLVLDTVGAGNGMIGFQVLLSIGELSLAIVIALMSG LLTGILLNLKIWKAPHEAKYFDDQVFWKFPHLAVGF
<b>Research Area</b>	Cardiovascular
<b>Source</b>	in vitro E.coli expression system
<b>Target Names</b>	RHD
<b>Protein Names</b>	RHXIIIRh polypeptide 2Short name:RhPIIRhesus D antigenCD_antigen: CD240D
<b>Expression Region</b>	2-417aa
<b>Notes</b>	Repeated freezing and thawing is not recommended. Store working aliquots at 4°C for up to one week.
<b>Tag Info</b>	C-terminal 10xHis-tagged
<b>Mol. Weight</b>	47.9 kDa
<b>Protein Length</b>	Full Length of Mature Protein
<b>Image</b>	



(Tris-Glycine gel) Discontinuous SDS-PAGE (reduced) with 5% enrichment gel and 15% separation gel.

### Reconstitution

We recommend that this vial be briefly centrifuged prior to opening to bring the contents to the bottom. Please reconstitute protein in deionized sterile water to a concentration of 0.1-1.0 mg/mL. We recommend to add 5-50% of glycerol (final concentration) and aliquot for long-term storage at -20°C/-80°C. Our default final concentration of glycerol is 50%. Customers could use it as reference.

### Shelf Life

The shelf life is related to many factors, storage state, buffer ingredients, storage temperature and the stability of the protein itself. Generally, the shelf life of liquid form is 6 months at -20°C/-80°C. The shelf life of lyophilized form is 12 months at -20°C/-80°C.