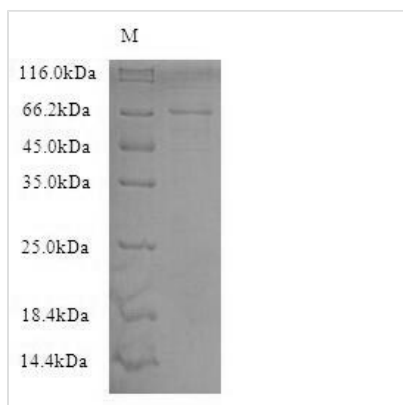




Recombinant Human Neurofilament light polypeptide (NEFL)

Product Code	CSB-CF015688HU
Relevance	Neurofilaments usually contain three intermediate filament proteins: L, M, and H which are involved in the maintenance of neuronal caliber.
Abbreviation	Recombinant Human NEFL protein
Storage	The shelf life is related to many factors, storage state, buffer ingredients, storage temperature and the stability of the protein itself. Generally, the shelf life of liquid form is 6 months at -20°C/-80°C. The shelf life of lyophilized form is 12 months at -20°C/-80°C.
Uniprot No.	P07196
Product Type	Transmembrane Protein
Immunogen Species	Homo sapiens (Human)
Purity	Greater than 90% as determined by SDS-PAGE.
Sequence	SSFSYEPYYSTSYKRRYVETPRVHISSVRSGYSTARSAYSSYSAPVSSSLSVR RSYSSSSGSLMPLENLDLSQVAAISNDLKSIRTQEKAQLQDLNDRFASFIERV HELEQQNKVLEAELLVLRQKHSEPSRFRALYEQEIRDLRLAAEDATNEKQALQ GEREGLEETLRNLQARYEEEEVLSREDAEGRLMEARKGADEAALARAELEKRID SLMDEISFLKKVHEEEIAELQAQIQYAQISVEMDVTKPDLAALKDIRAQYEKLA AKNMQNAEEWFKSRFTVLTESAANKNTDAVRAAKDEVSESRRLLKAKTLEIEAC RGMNEALEKQLQELEDKQNADISAMQDTINKLENELRTTKSEMARYLKEYQDL LNVKMALDIEIAAYRKLLERGEETRLSFTSVGSITSGYSQSSQVFGRSAYGGLQT SSYLMSTRSFPSYYTSHVQEEQIEVEETIEAAKAEAAKDEPPSEGEAEKKKVEGAG EEQAAKKKD
Research Area	others
Source	in vitro E.coli expression system
Target Names	NEFL
Protein Names	68 kDa neurofilament protein Neurofilament triplet L protein
Expression Region	2-543aa
Notes	Repeated freezing and thawing is not recommended. Store working aliquots at 4°C for up to one week.
Tag Info	N-terminal 10xHis-tagged
Mol. Weight	64.9kDa
Protein Length	Full Length of Mature Protein
Image	



(Tris-Glycine gel) Discontinuous SDS-PAGE (reduced) with 5% enrichment gel and 15% separation gel.

Reconstitution

We recommend that this vial be briefly centrifuged prior to opening to bring the contents to the bottom. Please reconstitute protein in deionized sterile water to a concentration of 0.1-1.0 mg/mL. We recommend to add 5-50% of glycerol (final concentration) and aliquot for long-term storage at -20°C/-80°C. Our default final concentration of glycerol is 50%. Customers could use it as reference.

Shelf Life

The shelf life is related to many factors, storage state, buffer ingredients, storage temperature and the stability of the protein itself.

Generally, the shelf life of liquid form is 6 months at -20°C/-80°C. The shelf life of lyophilized form is 12 months at -20°C/-80°C.