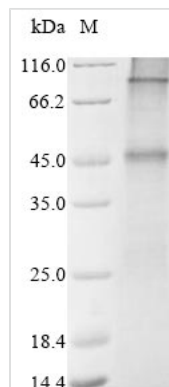




Recombinant Human Glucagon-like peptide 1 receptor (GLP1R)

Product Code	CSB-CF009514HU(A4)
Abbreviation	Recombinant Human GLP1R protein
Storage	The shelf life is related to many factors, storage state, buffer ingredients, storage temperature and the stability of the protein itself. Generally, the shelf life of liquid form is 6 months at -20°C/-80°C. The shelf life of lyophilized form is 12 months at -20°C/-80°C.
Uniprot No.	P43220
Product Type	Transmembrane Protein
Immunogen Species	Homo sapiens (Human)
Purity	Greater than 85% as determined by SDS-PAGE.
Sequence	RPQGATVSLWETVQKWREYRRQCQRSLTEDPPPATDLFCNRTFDEYACWPD GEPGSFVNVSCPWYLPWASSVPQGHVYRFCTAEGWLQKDNSSLPWRDLSE CEESKRGERSSPEEQLLFLYIIYTVGYALSFSALVIASAILLGFRHLHCTRNYIHL NLFASFILRALSVFIKDAALKWMYSTAAQQHQWDGLLSYQDSLSCRLVFLLMQ YCVAANYYWLLVEGVLYLTLLAFSVLSEQWIFRLYVSIGWGVPLLFPVWGWIVK YLYEDEGCWTRNSNMNYWLIIRLPILFAIGVNFILFVRVICIVVSKLKANLMCKTD IKCRLAKSTLTLLPLLGTHEVIFAFVMDEHARGTLRFIKLFTLSFTSFQGLMVAIL YCFVNNEVQLEFRKSWERWRLEHLHIQRDSSMKPLKCPTSSLSSGATAGSSM YTATCQASCS
Research Area	Neuroscience
Source	in vitro E.coli expression system
Target Names	GLP1R
Expression Region	24-463aa
Notes	Repeated freezing and thawing is not recommended. Store working aliquots at 4°C for up to one week.
Tag Info	N-terminal 10xHis-tagged
Mol. Weight	53.6 kDa
Protein Length	Full Length of Mature Protein
Image	



(Tris-Glycine gel) Discontinuous SDS-PAGE (reduced) with 5% enrichment gel and 15% separation gel.

Description

Human Glucagon-like peptide 1 receptor (GLP1R) amino acids 24-463 with a 10xHis-tag at the N-terminus were expressed in vitro E.coli expression system. The resulting protein is the recombinant full-length of mature human GLP1R protein. The purity of this protein is greater than 85% measured by SDS-PAGE analysis. Its calculated molecular weight is 53.6 kDa. This recombinant protein may be used to produce anti-GLP1R antibodies or in the studies of neuroscience.

GLP1R is a G protein-coupled receptor for GLP1 with wide expression in the CNS (central nervous system) and peripheral tissues such as heart, kidney, and adipose tissue (AT). GLP1 binding to GLP1R exerts its biological roles such as promoting glucose-dependent insulin secretion and inhibiting gastric emptying and food intake. A recent study has shown the implication of GLP1R in energy metabolism by directly stimulating mitochondrial bioenergetics and brown AT remodeling.

Reconstitution

We recommend that this vial be briefly centrifuged prior to opening to bring the contents to the bottom. Please reconstitute protein in deionized sterile water to a concentration of 0.1-1.0 mg/mL. We recommend to add 5-50% of glycerol (final concentration) and aliquot for long-term storage at -20°C/-80°C. Our default final concentration of glycerol is 50%. Customers could use it as reference.

Shelf Life

The shelf life is related to many factors, storage state, buffer ingredients, storage temperature and the stability of the protein itself. Generally, the shelf life of liquid form is 6 months at -20°C/-80°C. The shelf life of lyophilized form is 12 months at -20°C/-80°C.