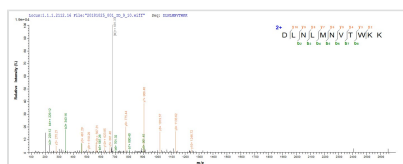




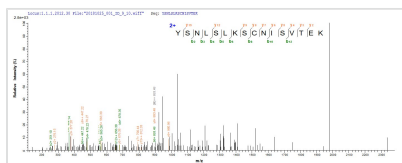
Recombinant Mouse Embigin (Emb)

Product Code	CSB-CF007631MO
Abbreviation	Recombinant Mouse Emb protein
Storage	The shelf life is related to many factors, storage state, buffer ingredients, storage temperature and the stability of the protein itself. Generally, the shelf life of liquid form is 6 months at -20°C/-80°C. The shelf life of lyophilized form is 12 months at -20°C/-80°C.
Uniprot No.	P21995
Storage Buffer	Lyophilized from Tris/PBS-based buffer, 6% Trehalose
Product Type	Transmembrane Protein
Immunogen Species	Mus musculus (Mouse)
Purity	Greater than 85% as determined by SDS-PAGE.
Sequence	DPTDPTFTSLPVREEMMAKYSNLSLKSCNISVTEKSNVSVEENVILEKPSHVEL KCVYTATKDLNLMNVTWKKDDEPLETTGDFNTTKMGNTLTSSQYRFIVFSKQL GKYSCVFGEKELRGTFNIHVPKAHGKKKSLIAYVGDSVLKVCQDCLPLNWT WYMGNETAQVPIDAHSNEKYIINGSHANETRLKIKHLLLEDGGSYWCRAFQL GESEEQNELVVLFLVPLKPFLLAEVILLVAIILLCEVYTHKKKNDPDAGKEFE QIEQLKSDDSDNGIENNVPYRKTDSADQ
Research Area	Tags & Cell Markers
Source	in vitro E.coli expression system
Target Names	Emb
Protein Names	Recommended name: Embigin Alternative name(s): Teratocarcinoma glycoprotein Gp-70
Expression Region	34-330aa
Notes	Repeated freezing and thawing is not recommended. Store working aliquots at 4°C for up to one week.
Tag Info	N-terminal 10xHis-tagged
Mol. Weight	36.4 kDa
Protein Length	Full Length of Mature Protein

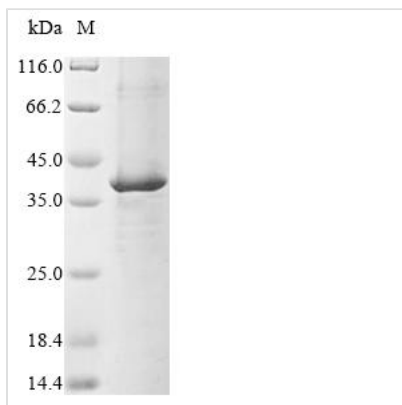
Image



Based on the SEQUEST from database of E.coli host and target protein, the LC-MS/MS Analysis result of CSB-CF007631MO could indicate that this peptide derived from E.coli-expressed Mus musculus (Mouse) Emb.



Based on the SEQUEST from database of E.coli host and target protein, the LC-MS/MS Analysis result of CSB-CF007631MO could indicate that this peptide derived from E.coli-expressed Mus musculus (Mouse) Emb.



(Tris-Glycine gel) Discontinuous SDS-PAGE (reduced) with 5% enrichment gel and 15% separation gel.

Reconstitution

We recommend that this vial be briefly centrifuged prior to opening to bring the contents to the bottom. Please reconstitute protein in deionized sterile water to a concentration of 0.1-1.0 mg/mL. We recommend to add 5-50% of glycerol (final concentration) and aliquot for long-term storage at -20°C/-80°C. Our default final concentration of glycerol is 50%. Customers could use it as reference.

Shelf Life

The shelf life is related to many factors, storage state, buffer ingredients, storage temperature and the stability of the protein itself. Generally, the shelf life of liquid form is 6 months at -20°C/-80°C. The shelf life of lyophilized form is 12 months at -20°C/-80°C.